



A publication of the
Freightliner Chassis Owners Club

SPRING 2019

WWW.FCOCRV.ORG



SOL

UPCOMING RALLIES
JOIN US AT ONE OF OUR 2019
FCOC RALLIES.

DETAILS ON PAGE 17.

RALLY RECAP
HIGHLIGHTS FROM OUR
SEFFNER RALLY.

DETAILS ON PAGE 24.

FREIGHTLINEAGE¹⁹:
FCCC ATTENDS THE 2019 RVX.

DETAILS ON PAGE 29.





WHEN YOU NEED PARTS, SERVICE OR REPAIRS...

...the well stocked parts departments and technicians at Premier Truck Group are ready to help you keep your RV up and running. And, in the event you should require paint and body repair, our shops are well equipped to get your damaged or road worn vehicle looking like new again.

PREMIER TRUCK GROUP - YOU CAN COUNT ON US.

For more about capabilities, hours of operation and locations visit:

premiertruck.com



AMARILLO ARDMORE CHATTANOOGA DALLAS FORT WORTH KNOXVILLE ODESSA OKLAHOMA CITY TULSA



FIND FCCC ON SOCIAL MEDIA

Keep up with everything FCCC via social media! Their corporate Facebook (Facebook.com/FreightlinerCustomChassis), Instagram (instagram.com/FreightlinerCustomChassis) and Twitter (@DriveFCCC) covers news, announcements and updates from all FCCC markets, while Facebook.com/RoadTrippers focuses solely on RVing - the people, the products and the lifestyle.



TABLE OF CONTENTS

04	COMMUNITY UPDATES Club updates, FCOC officer reports and FCCC news
12	INSIDE FCCC News and updates from our headquarters in Gaffney, SC
17	UPCOMING RALLIES Rally information and registration
24	RALLY RECAP Seffner, FL
32	FEATURED DEALER Find a service dealer near you
34	FEATURED ARTICLE Winnebago's new Enhanced Accessibility line
28	PARTNER SHOWCASE Jayco and Overland Insurance
30	SEASONAL ARTICLE FCCC attends the 2019 RVX
35	FEATURED MEMBER Pattee Perez - FCOC Secretary
36	ROADSIDE RECIPES Easy and delicious RV-approved dishes

CONTENTS
RV
SOUL

SPRING 2019

UPCOMING RALLIES*

2019	
5/27-30	MURFREESBORO, AR
7/15-19	AMANA, IA
9/23-27	COOS BAY, OR

* Subject to change
FCOC is not to be held responsible for personal statements, opinions or representations advanced in papers, chapter newsletters, web site, in discussions at any meetings or its Internet site and Discussion Forums, or the validity of statements contained in any advertisements or printed materials.

MEET YOUR FCOC OFFICERS



PRESIDENT



Steve Batorson F373083
4505 N. Sanders Road
Tucson, AZ 85743
520-444-6772
president@fcocrv.org

SR. VICE PRESIDENT



Barbara Knutson F320163
3572 NW 21st Ave
Okeechobee, FL 34974
561-703-5284
svp@fcocrv.org

TREASURER



Tom Bernardi F382571
15305 Lake Maurine Drive
Odessa, FL 33556
813-920-3852
treasurer@fcocrv.org

VP MEMBERSHIP



Mary Costigan F323758
900 Bradford Court
San Jacinto, CA 92583
951-452-2999
vp.membership@fcocrv.org

SECRETARY



Pattee Perez F701016
28284 Las Casas
Mission Viejo, CA 92692
949-697-8893
secretary@fcocrv.org

EDITOR



Cindy Feindel F338560
31 Nixon Road
Framingham, MA 01701
508-509-8123
editor@fcocrv.org

VP BUSINESS DEVELOPMENT



James Peek F403774
570 Stratford Parkway
Winder, GA 30680
732-552-6862
vp.busdev@fcocrv.org

VP AREA OPERATIONS-EAST



Roy Hopper F286929
5965 41st Street
Vero Beach, FL 32967
772-559-3522
vp.area.ops.e@fcocrv.org

VP AREA OPERATIONS-WEST



Katherine Henley F173175
1901 W. Hwy 287 Business
Waxahachie, TX 75165
214-704-2437
vp.area.ops.w@fcocrv.org

ASSISTANT AREA OPERATIONS



James Robertson F313336
2200 Cabaniss Lane
Weatherford, TX 76088
817-692-1330
asst.area.ops@fcocrv.org

WEBMASTER



Tom Digate F469360
514 Americas Way
PMB 7850
Box Elder, SD 57719
260-413-3670
webmaster@fcocrv.org

AN ICON OF AMERICAN LUXURY



INTRODUCING THE NEW 2020 AMERICAN REVOLUTION

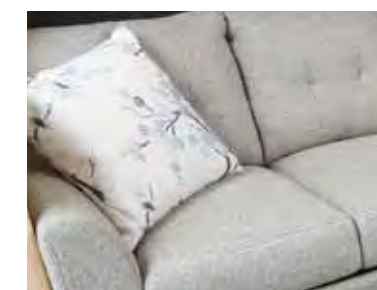


TOP FEATURES

- Freedom Floor HWH Flush Slide System and Leveling Jacks
- Exclusive 450HP Liberty/Freightliner Chassis® w/60 Degree Wheel Cut & Independent Front Suspension (IFS)
- UltraSteer® B-Series w/Passive Steer on Tag Axle
- Push Button Start
- Auto Headlights
- LCD Dash Display w/ 10" Monitors
- Power Cockpit Shades & Blinds
- Firefly™ Integrations Electronic Control System w/Multiplex Wiring
- Aqua-Hot® 400D Heating System
- Zone Electric Tile Heated Flooring (2)
- Full Tile Shower
- Roof Mounted Awning (Second Awning Optional)
- Emergency Exit Door (Optional)
- Undercarriage LED Lighting
- Power Generator Slide
- Technology Package
(JBL® Audio Package, Wifi Ranger, Cell Booster, 265W Solar Panel and Mobile Eye)
- Available Floorplans 42Q | 42V



Freedom Floor HWH Flush Slide System



Apex Residential Style Furniture



americancoach.com



OFFICERS' MESSAGE



Welcome to spring!

For those who stayed North, it's time to dig that motorhome out of storage; and for those in the South, get ready to crank-it up for the drive home. I really say that tongue in cheek; however, 80% of our Club members are on either coast and do seem to be in the process of the winter/summer migration.

As you know, I'm always asking for ideas from our members. One that has been mentioned several times is to, along with the type of rallies that we are now doing, come up with a caravan-type rally to an event or location. The Rose Parade, a NASCAR event, Alaska, and Mardi Gras were all suggested. If you have another idea for a location or event, you can let me know. These, of course, will be more expensive than our other rallies, but will be all-inclusive guided tours. I believe Adventure Caravans, one of our advertisers, can provide us with an exclusive tour if we have enough interest and can give them the lead time it takes to put a tour together.

The Amana rally registration is tracking very well and we really do not have an upper limit. In Amana, attendees will enjoy an exclusive matinee at the Old Creamery Theater, which is usually a murder mystery comedy and are done very well. Also, I believe Barefoot Becky will be making an appearance. She is very entertaining and can give a squeeze box real work-out.

The Coos Bay rally, which is quickly approaching, does have a limit. So, if you are interested in attending, please don't wait too much longer to register.

You will see in this magazine that the Nominating Committee has filled the

slate of officers – including the president's position, which James Peek has agreed to run for. James and I talk often, as he is VP Business Development for the Club now. Our conversations have also included the duties of the President and I believe he will make a good one. I will be staying on the board for one year as a non-voting member in the role of Past President in order to ensure a smooth transition.

I want to bring to your attention that if you purchased a used motorhome, please make sure it is registered in your name with Freightliner Custom Chassis Corp. I help with looking up parts for the members that attend Camp Freightliner classes. In one group, I found that of those who had purchased a used unit, all but one were still registered in the original owner's name. It is important for this to be correct for the purpose of being notified if there should be a recall on your coach. You can call the 1-800-385-4357, 24/7 Direct hotline to get this done. Make sure you have the last six digits of your VIN number when you call.

Hope to see you down the road. Travel safe!

Steve Batorson

Steve Batorson
FCOC President

CHRYSLER AFFILIATE REWARDS

Did you know that as a member of the Freightliner Chassis Owners Club, you can get unbeatable pricing on Chrysler vehicles through Affiliate Rewards?



2016 Jeep Wrangler

Receive the Preferred Price* (1% below factory invoice) on the purchase or lease of most new Chrysler, Jeep®, Dodge, Ram and FIAT vehicles. The Preferred Price – combined with current incentives† – can help you save up to thousands of dollars off the MSRP.** Whatever you do, don't miss this amazing opportunity!

Participating in the program is easy. Here's how:

1. Get your Company Code, which can be obtained from the FCOC President. Just send an email to president@fcocrv.org and include your FMCA number in the subject line or call (321) 704-0695.
2. Visit chrysleraffiliates.com or call (888) 444-4321 to learn more about the program and to obtain a Control Number.
3. Take your Control Number, with proof of eligibility (FCOC membership card), to any participating U.S. Chrysler, Jeep®, Dodge or Ram dealership or FIAT Studio. If you don't have a membership card, contact us at vp.membership@fcocrv.org.
4. Ask for a copy of the vehicle invoice and you'll see the Preferred Price (PP) clearly listed.

Affiliate Rewards



*The Preferred Price is the maximum amount you will be charged by a participating U.S. dealer for an eligible vehicle. See dealer for details. A \$75 administration fee applies. Offer valid for up to 2 (two) Chrysler Group LLC vehicles per calendar year. The Dodge Viper and Jeep Grand Cherokee SRT are not currently eligible for this program.

†Not all incentives may be available, as they vary by region and residency of buyer. See dealer for complete details.

**Manufacturer's Suggested Retail Price. Excludes destination, tax, title and registration fees. Chrysler, Jeep, Dodge and Ram are registered trademarks of Chrysler Group LLC. FIAT is a registered trademark of Fiat Group Marketing & Corporate Communication S.p.A., used under license by Chrysler Group LLC.

©2012 Chrysler Group LLC. All rights reserved.

NIGHTHAWK

The world's first illuminated tow bar

Patent pending • US patent numbers 6,619,686, 6,957,824, 7,029,021 and 7,461,855

LED strips illuminate with RV taillights and provide eye-catching good looks while also lighting up the dead spot between your RV and towed vehicle. Our non-binding tow bars are the easiest to disconnect in the industry. They release at any angle or bind. The first time - every time. Includes internally routed safety cables and power cord.

**Time Tested
Time Proven**

**roadmasterinc.com
800-669-9690**

**Questions about Dinghy Towing?
Call the experts
1-800-669-9690**

42 years of experience is at your fingertips.

We're Roadmaster. We pretty much invented towing. So if you've got a question about tow bars, why not call the experts?

CLUB UPDATES



The Nominating Committee submits the following slate of Officers to be elected at the July Business Meeting, which will be held at the Amana, Iowa Rally.

President—James Peek
Webmaster—Tom Digate
VP Membership—Mary Costigan
Operations West—Katherine Henley
Secretary—Pattee Perez
VP Business Development

If anyone is interested in the position of VP Business Development for the RV Soul magazine, please contact Katherine Henley at (214) 704-2437.

All nominees have been contacted regarding their responsibilities and indicated a willingness to serve the Club.

As a reminder, anyone that wishes to nominate a candidate may do so at the July Business Meeting in Amana. A motion from the floor that is seconded, followed by acceptance by the person being nominated on the ballot would be required. Once nominations are closed, the election will begin.

On behalf of the Nominating Committee (Katherine Henley, Julia Robertson, John MacCallum, Beth Digate and Cheryl Peek), **respectfully submitted,**

Barbara Knutson

AS HAPPY AS WE ARE TO SEE YOU...

OUR GOAL IS TO GET YOU WHERE YOU REALLY WANT TO BE.



Premier Network with 10 full-service dealerships in Illinois, Indiana & Missouri

Extensive Parts & Service inventory and hours of operation - 24/7 in Troy

Hook-Ups, Ample Parking & Easy Access available at most locations.



www.truckcentersinc.com
 Family Owned & Operated Since 1970



CAMPFIRE NEWS

VOLUME 1

In Today's News

Sunny 75°

Last month, two MASA members were traveling in their RV when suddenly one of them needed medical attention. 911 was called, & they were taken by ground ambulance to a local hospital. Soon, it was known he needed airlift to Big Town General for emergency surgery. After a 3 week stay they were transported back home to recuperate at their local hospital. Since that time, their RV was shipped back to their driveway.

MASA Paid For Them:
 Ground Ambulance
 Air Ambulance
 Trip Home
 RV Shipping

BUT...
We cover even more!!!



Learn more about the many Member Benefits today & Special Discounted Pricing.

Please call:
770.625.8456

THE ROAD IS WAITING. GO EXPLORE.



THE MICHELIN® X® LINE™ ENERGY Z TIRE.

There's a lot of world out there to explore, and with the MICHELIN® X® LINE™ ENERGY Z 315/80R22.5 tires, you have nothing stopping you. Your motor coach deserves the most fuel-efficient, all-position MICHELIN® tire in the motor home industry. Groove wall miniature sipes and a large net contact area help to improve your ride, longevity and handling, which are designed to give you more mileage for your money. With these tires on your RV, the only thing on your mind should be where to go next.

Explore the full lineup at MichelinRVTires.com.

Copyright © 2019 Michelin North America, Inc. All rights reserved.
 The Michelin Man is a registered trademark owned by Michelin North America, Inc.



MICHELIN



SACRAMENTO TRUCK CENTER MOTORHOME SERVICE



Regular preventive maintenance check ups are the key to keeping your Freightliner chassis in safe, reliable condition.

Having STC perform a chassis inspection is the best way to ensure you will get safe, enjoyable miles from your Freightliner chassis.

Our factory trained technicians will perform a thorough 15-point chassis inspection free of charge and will provide you with an estimate for any repairs needed. Additionally, FCOC members will receive a 10% discount on labor and a fleet discount on any parts needed.

AT SACRAMENTO TRUCK CENTER, YOU WILL FIND:

- A Clean, Organized Service Department
- Factory-Trained Technicians on FCCC, Cummins, Cat, Detroit Diesel, MBE Allison
- Friendly, Professional Service Personnel
- All of the Latest Tools and Equipment

COME TO SACRAMENTO TRUCK CENTER "WHERE SERVICE IS PERFORMED WITH INTEGRITY"

For more information, visit our website: www.sacramentotruckcenter.com

Email Contact: LCowan@sacramentotruck.com



Alliance Truck Parts has over 30 product lines that serve the commercial transportation industry with reliable new and remanufactured parts and accessories for all makes and all models¹ to keep trucks and buses on the road. All Alliance Truck Parts meet or exceed OES specifications for quality, fit and finish and are backed by a nationwide warranty², which means you don't have to trade quality for price.

Find your nearest location at alliancetruckparts.com



DTNA/PSM-A-1005. Specifications are subject to change without notice. Copyright © Daimler Trucks North America LLC. All rights reserved. Alliance Truck Parts is a brand of Daimler Trucks North America LLC, a Daimler company. ¹ For nearly all heavy-duty truck makes and models. ² See warranty for complete details and limitations.

DAIMLER | Alliance Truck Parts - A Daimler Group Brand



Get The Most From Your Allison-Equipped Motorhome

Allison Motorhome Series™ fully automatic transmissions provide customized performance at your fingertips. The transmission will automatically select gears based on engine rpm, throttle position, vehicle load and road speed. However, you can manually control the upshifts and downshifts when it is necessary for driving in different conditions. To avoid damage to the drivetrain, the transmission will not allow you to select a range that will over-speed the engine.



Highway Driving (Level Terrain)

Operating in the Drive mode is recommended when driving in normal highway conditions.



Mountainous Driving (Up & Down Terrain)

When ascending a grade, gently release pressure on the throttle and select a lower gear range to maintain higher engine rpm. Road speed may decrease, but power (torque) will remain at peak output. When descending a grade, never use a higher gear range than was used ascending the same grade. Selecting a lower gear range will also minimize cycling between ranges on a series of short up and down hills.



City Driving (Stop & Go Traffic)¹

To maximize performance select the lowest gear range that allows the vehicle to reach the speed you expect to attain between stops. This will minimize cycling between higher ranges and provide better vehicle cooling while driving in stop-and-go conditions.



Winter Driving (Ice Or Snow)²

If possible, reduce road speed and select a lower gear range before you lose traction. Select the gear range that will not exceed the speed you expect to maintain. Accelerate or decelerate gradually to prevent losing traction. It is very important to gradually slow down when a lower gear range is selected. It is also important to allow the transmission to reach the lower gear range before attempting to accelerate. This will avoid an unexpected downshift during acceleration.



Engine Braking³

Engine braking provides good speed control for going down grades. When the vehicle is heavily loaded or the grade is steep, it may be desirable to preselect a lower range reaching the grade. If engine-governed speed is exceeded, the transmission will upshift automatically to the next range.

For more information, visit allisontransmission.com.

1 In the event you leave the vehicle or driving compartment, even momentarily, while the engine is running, be sure the transmission is in Neutral and the parking brake and/or emergency brakes are set and properly engaged. Unexpected and possible sudden vehicle movement may occur if these precautions are not taken.

2 Using the retarder on wet or slippery roads may cause loss of traction on the drive wheels—your vehicle may slide out of control. To help avoid injury or property damage, turn the retarder enable to OFF when driving on wet or slippery roads. The retarder is automatically disabled whenever the vehicle anti-lock brake system (ABS) is active. However, in case the ABS malfunctions, it is recommended that the retarder enable switch, if present, be disabled.

3 To avoid loss of control, use a combination of downshifting, braking and other retarding devices. Downshifting to a lower transmission range increases engine braking and can help you maintain control. The transmission has a feature to prevent automatic upshifting above the lower range selected. However, during downhill operation, if engine-governed speed is exceeded in the lower range, the transmission will upshift to the next higher range to prevent engine damage. This will reduce engine braking and could cause a loss of control. Apply the vehicle brakes or other retarding device to prevent exceeding engine-governed speed in the lower range selected.

© 2017 Allison Transmission Inc., All Rights Reserved.



INSIDE

NEWS AND UPDATES
FROM OUR HEADQUARTERS IN GAFFNEY, SC



CES SHOW

We had a wonderful time exploring the world of consumer technologies, research and inspiration at the 2019 Consumer Electronics Show in Las Vegas. The all-electric products on display, as well as a fully autonomous Mercedes van were among some of our favorites.

FMCA WESTERN RALLY

Perfect weather, awesome booth displays, great attendance – we could not have had a better time in Indio, CA.



TAMPA SUPERSHOW

It was a packed house at the 2019 Florida RV SuperShow where many attendees stopped by for chassis walkarounds, Fireside Chats and Before You Buy seminars.



NIRVC RIBBON CUTTING

Congratulations to our friends at National Indoor RV Centers on the opening of their new Las Vegas dealership location.



HABITAT FOR HUMANITY

The South Carolina sunshine provided us with plenty of opportunity to get out and help those in need.



SEATTLE RV SHOW

Our team enjoyed their time at the 2019 show, as well as exploring the beautiful city.

NTEA

Our team ventured to Indianapolis, Indiana, for the 2019 NTEA Work Truck Show where we introduced the new powertrain option for our chassis lineup. The S2G chassis now comes with two engine options – an 8.0L as well as a new 8.8L from FCCC's DriveForce lineup of non-diesel engines.



FMCA 99TH ANNUAL INTERNATIONAL CONVENTION & RV EXPO

Perry, GA provided the perfect location and weather for the 99th annual Family Motor Coach Association Convention & Expo. Thanks to all who attended, stopped by the FCCC booth and, especially, to those that sat in on our Fireside Chat seminars to learn more about their Freightliner Custom Chassis. diesel engines.



YOUR SO CAL RV HEADQUARTERS

2015-2017 FCCC DEALER OF THE YEAR



- 2 Hour Express Assessments
- 15% Discount on 6/12/15 month full service
- Same Day Appointments
- Ask about Cummins Inline™ Mini Datalink Adapter



10150 CHERRY AVE. FONTANA CA 92335
WWW.TRANS-WEST.COM
909-770-5620

**Where Family & Customers
ALWAYS Come FIRST!**

At Freedom RV **We Invite** you to visit us today, for service, a new RV, or to trade in your current RV. We want to personally say **Welcome** to all of your residents. Come on down and say **Hello**.

Best RV Dealer in Tuscon

**Sales, Consign, Financing,
with extended warranties available!**

Go Where The Road Takes You

Freedom RV
go where the road takes you

1-800-782-2294
520-750-1100
freedomrvaz.com

Sales, Service, Parts: 3735 E Irvington Rd, Tucson
Sales: 7475 N Casa Grande Hwy, Marana
Service, Parts: 6260 N Travel Center, Tucson

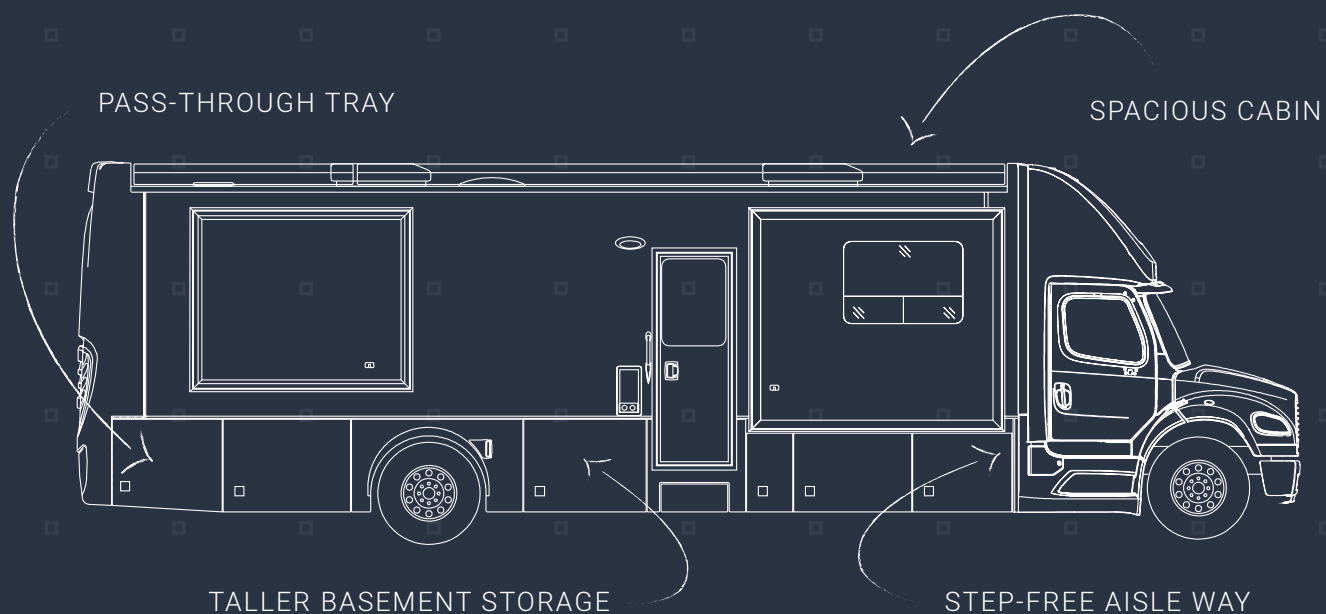
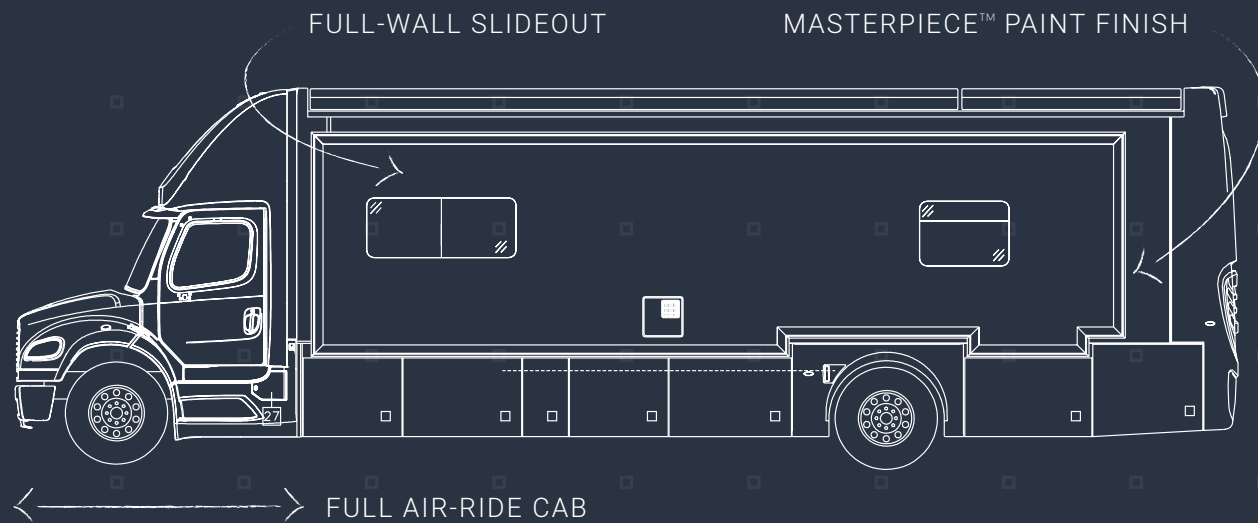
Redefining Performance.

Better In Every™ Way.

What makes Cummins the leading choice for RV customers? An unsurpassed combination of performance, reliability and fuel economy. From the 200-hp B6.7™ to the 605-hp X15™ Performance Series, there's a Cummins diesel that's the right size for your next RV – all backed by the largest, most capable service and support network in North America, including numerous Coach Care™ RV Centers. For confidence over any terrain, longer trips between fueling and world-class support, you deserve a diesel. Call Cummins Care at 1-800-CUMMINS™ (1-800-286-6467) or visit cumminsengines.com/rv to see how our 2017 engines are redefining performance in every way.



©2017 Cummins Inc., Box 3005, Columbus, IN 47202-3005 U.S.A.



Driven By You

WHAT'S NEXT IS ALMOST HERE

The result of two years of research and development, the 2020 Super Star not only represents the first Super C coach we've ever built, but the first and only Super C to feature a full air-ride cab, full-wall slideout, step-free aisle way, and more. Because doing it better starts with reinventing how it's done.

Coming Summer 2019—find a dealer at NewmarSuperC.com

UPCOMING RALLIES



MURFREESBORO, ARKANSAS

May 27-30, 2019

CRATER OF DIAMONDS STATE PARK

209 State Park Road
Murfreesboro, AR 71958
(870) 285-3113

AMANA, IOWA

July 15-19, 2019

AMANA RV PARK & EVENT CENTER

3890 C Street
Amana, IA 52203
(319) 622-7616

COOS BAY, OREGON

September 23-27, 2019

THE MILL CASINO HOTEL & RV PARK

3201 Tremont Street
North Bend, OR 97459
(800) 953-4800

* Rally dates subject to change

CANCELLATION POLICY FOR ALL RALLIES*

- 1) An administration fee of \$25 will be charged for all registrations received.
- 2) Members who register and then:
 - a) Cancel a minimum of 31 days prior to the start of the rally will receive a full refund minus the administration fee.
 - b) Cancel 30 to 8 days prior to the start of a rally will be charged for any non-refundable commitments paid in advance for the rally.
 - c) Cancel 7 or less days prior to the rally's start will result in no portion of the rally fees being refunded.

- 3) Members that register and pay for a rally and do not attend will not receive any refund.

- 4) All refunds will be made at the conclusion of the rally.

** Many of the services we use in hosting a rally have to be paid (some as far as a year) in advance. Due to these non-refundable expenditures, we cannot continue to absorb the costs of late cancellations and must have these rules in place. Thank you for understanding.*

Please note that FCCC rallies can no longer accommodate special dietary requests due to the wide variety of caterers and high cost for special menus. We apologize for any inconvenience.

MURFREESBORO, ARKANSAS

May 27-30, 2019

\$247/Coach, \$199/Single

Each Extra Person: add \$100

CRATER OF DIAMONDS STATE PARK

209 State Park Road

Murfreesboro, AR 71958

(870) 285-3113

www.arkansasstateparks.com/parks/crater-diamonds-state-park



LAKE GREESON



CRATER OF DIAMONDS STATE PARK



KA-DO-HA INDIAN VILLAGE



WILDLIFE OBSERVATION BLIND TRAIL

DIGGING FOR DIAMONDS RALLY

Join us at one of the only places in the world that the public can search for real diamonds in their original volcanic source. Crater of Diamonds is a one-of-a-kind experience that invites visitors to search their 37-acre eroded volcanic crater – where any rock or mineral you find is yours to keep (more than 33,100 diamonds have been found so far!) You may bring your own equipment or rent from the park. Battery-operated and motor-driven mining tools are prohibited.

Other amenities include walking trails, picnic sites, five walk-in tent sites, a gift shop, Kimberlite Café and Diamond Springs Water Park (seasonal). We will be limited to 20 coaches.

RALLY FEE INCLUDES, BUT IS NOT LIMITED TO THE FOLLOWING:

- 3 Nights Full Hook-Ups with 50-Amp Power
- 3 Dinners
- 2 Breakfasts
- Happy Hours
- One-Day Diamond Mine Entrance

THINGS TO DO AND SEE IN MURFREESBORO

LAKE GREESON: Formed by a dam that was finished in 1950, the 7,000-acre clear lake is a hub of activity – skiing, boating, biking, fishing and scuba diving. Surrounded by 15 parks, the lake has excellent boat launches and campgrounds with electric hook-ups and sites available for reservation. (www.arkansas.com/accommodations/lake-greeson-0)

LITTLE MISSOURI RIVER: Water sports are big on the river, which offers class-five canoeing and kayaking. It also features some of the best fishing in the state: smallmouth bass, rainbow trout, catfish and bream. (www.arkansas.com/fishing-spot/little-missouri-river)

LITTLE MISSOURI RIVER TRAIL: Approximately 13 miles in length, the trail is set along portions of the river where hikers and bikers can see cascading waterfalls, old-growth pine stands and giant hardwoods. “One of the most scenic areas, the ‘Winding Stairs’ area, offers breathtaking views of the fort, river and large novaculite rock outcrops,” according to the U.S. Forest Service. (www.hikingproject.com/trail/7009535/little-missouri-river-trail)

SOUTHERN SPECIALTIES FINE JEWELRY: Housed in a century-old downtown building, the shop takes uncut diamond finds from the Crater and turns them into jewelry. They also focus on cut diamonds, cut and uncut Colombian emeralds and sterling silver jewelry. (www.facebook.com/diamcoinc)

KA-DO-HA INDIAN VILLAGE: The ancient archeological site is the only open mound in the U.S. Visitors will learn about the culture of the eastern peoples known as the “Mound Builders,” and can search the field for artifacts – keeping whatever it is they find. (www.caddotc.com/KaDoHaInfo/Ka-Do.htm)

WILDLIFE OBSERVATION BLIND TRAIL: A short walk on a gravel trail leads visitors to the Wildlife Observation Blind where one may glimpse a view of Whitetail deer, gray squirrels, armadillos, numerous bird species and more. (www.arkansas.com/hiking-backpacking/wildlife-observation-blind-trail)

MURFREESBORO, ARKANSAS RALLY

MAY 27-30, 2019

CRATER OF DIAMOND STATE PARK | 209 STATE PARK RD | MURFREESBORO, AR 71958 | (870) 285-3116

Rally Master: Tom James | (916) 870-9322 | tjames@adcomworldwide.com

register online
www.FCOCRv.org

Member #: _____

Pilot: _____
Last First

Nickname for Badge: _____

Co-Pilot: _____
Last First

Nickname for Badge: _____

Will you have a guest(s) attending the rally? ☐ Yes ☐ No

If so, please give name(s) and age(s): _____

Address: _____
City State Zip Code

Primary phone #: _____ Cell phone #: _____

Email address: _____ Share your e-mail with other attendees? ☐ Yes ☐ No

Mfg/Model of Coach: _____ Length: _____

Any special events during the rally, e.g. birthdays or anniversary?: _____

First time at an FCOC rally? ☐ Yes ☐ No Volunteer to help with the rally? ☐ Yes ☐ No Handicap Parking? ☐ Yes ☐ No

FCOC – Freightliner Chassis Owners Club Member – Two people per coach	\$247.00 = \$ _____
FCOC – Freightliner Chassis Owners Club Member – One person per coach	\$199.00 = \$ _____
Each extra person in the coach over age 14 (Number of people _____)	x \$100.00 = \$ _____
Non-FCOC member additional per coach	\$50.00 = \$ _____
TOTAL = \$ _____	

Make check payable to: FCOC. **Mail to:** FCOC, PO Box 1527, Cortaro, AZ 85652 no later than April 15, 2019. (\$25 cancellation fee. No refunds after May 19.) In the Note section, please write "Murfreesboro, AR 2019." You should contact the campground directly for additional nights pre/post rally.

Ladies Social? ☐ Yes ☐ No Crafts? ☐ Yes ☐ No Attending Camp Freightliner? ☐ Yes ☐ No

Date Received: _____ Confirmation Sent: _____

AMANA, IOWA

July 15-19, 2019

\$350/Coach, \$250/Single

Each Extra Person: add \$99

AMANA RV PARK & EVENT CENTER

3890 C Street

Amana, IA 52203

(319) 622-7616

www.amanarvpark.com



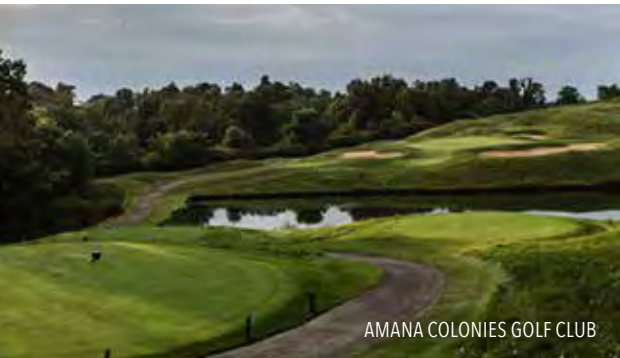
AMANA SHOPS



ACKERMAN WINERY



AMANA ARTS GUILD



AMANA COLONIES GOLF CLUB

2019 FCOC SUMMER RALLY

Our Annual Business Meeting will take place at this rally. In addition, attendees will enjoy two special events:

1. Fireside Winery – just a few minutes from the Amana Colonies – will provide us with a tour and delectable wine tasting, which will take place in the Gathering Room that overlooks the patio and provides an amazing view of the grounds.
2. The Old Creamery Theatre Company is proud to be the oldest professional theatre company in the state of Iowa. Here, we will be entertained with an afternoon play.

RALLY FEE INCLUDES, BUT IS NOT LIMITED TO THE FOLLOWING:

- 4 Nights Full Hook-Ups with 50-Amp Power
- 4 Dinners
- 3 Full Breakfasts
- 1 Continental Breakfast
- First Timers Orientation & Fireside Chat
- Special Entertainment
- Door Prizes, Crafts and Games
- Wi-Fi and Cable
- Ladies Social
- On-Site Freightliner Trailer with Technical Support, Parts & (some) Service.
- Freightliner Chassis on Display
- Camp Freightliner Classes Available at Additional Cost (held July 9-10 and July 11-12)

THINGS TO DO AND SEE IN AMANA

AMANA SHOPS: Described as a community of families, farmers and artisans with traditions dating back more than 150 years, visitors will be amazed by the quality craftsmanship and friendly demeanor. Indeed, it's like stepping back in time. (www.amanashops.com)

- Meat & Smokehouse: Handcrafting meats since 1855, they celebrate both German and Iowa tradition with "savory foods crafted with superior flavors."
- Woolen Mill: Housed in the original building, the mill produces goods for the community and sells textiles across the country with updated designs, colors and materials.
- General Store: The village landmark features whole bean coffees, loose-leaf teas, the year-round International Christmas market and delicious candies.
- Furniture & Clock Shop: Using century-old building methods, the shop designs and builds beautiful furniture, clocks and home décor. Visitors are welcome to watch the craftsmen at work.

ACKERMAN WINERY: Following traditions established in 1956, the winery handcrafts fruit wines with exotic varieties, including dandelion and red raspberry, as well as produces traditional varieties. Open daily with complimentary wine tasting. (www.ackermanwinery.com)

AMANA ARTS GUILD: This non-profit organization specializes in the folk arts, with exhibits ranging from needlework and baskets to woodwork and blacksmithing. Visitors can find handcrafted dolls and toys, as well as cookbooks with traditional recipes. (www.amanaartsguild.com)

AMANA COLONIES GOLF CLUB: See why the club is rated as one of Iowa's top public courses by *Golf Digest* and *Golf Magazine*. The 18-hole course winds through acres of white oak trees and forest, with a newly constructed clubhouse. (www.amanagolf.com)

KOLONIEWEG TRAIL: This 3.1 mile, mostly paved loop connects the villages of Amana and Middle Amana with scenic views of Lily Lake, farmland and pastures. Dogs are welcome, but must be on a leash. (www.alltrails.com/trail/us/iowa/amana-kolonieweg-trail)

IOWA BASEBALL MUSEUM OF NORWAY: This museum tells the story of baseball in Norway, Iowa: from its roots after the Civil War to the last team in 2006. Norway won 20 high school championships (including the 2006 team) and produced many college and semi-pro players, as well as 17 minor and four Major League Baseball players. (www.norwaybaseball.com)

2019 FCOC SUMMER RALLY

JULY 15-19, 2019

AMANA RV PARK | 3890 C STREET | AMANA, IA 52203 | (319) 622-7616

Rally Masters: James & Cheryl Peek | (732) 552-6862 | jlpeek1948@yahoo.com

Asst. Rally Master: Barbara Knutson | (561) 703-5284 | maxmandy0836@yahoo.com

Member #: _____

Pilot: _____
Last First

Nickname for Badge: _____

Co-Pilot: _____
Last First

Nickname for Badge: _____

Will you have a guest(s) attending the rally? ☐ Yes ☐ No

If so, please give name(s) and age(s): _____

Address: _____
City State Zip Code

Primary phone #: _____ Cell phone #: _____

Email address: _____ Share your e-mail with other attendees? ☐ Yes ☐ No

Mfg/Model of Coach: _____ Length: _____

Any special events during the rally, e.g. birthdays or anniversary?: _____

First time at an FCOC rally? ☐ Yes ☐ No Volunteer to help with the rally? ☐ Yes ☐ No Handicap Parking? ☐ Yes ☐ No

FCOC – Freightliner Chassis Owners Club Member – Two people per coach	\$350.00 = \$ _____
FCOC – Freightliner Chassis Owners Club Member – One person per coach	\$250.00 = \$ _____
Each extra person in the coach over age 14 (Number of people _____)	x \$99.00 = \$ _____
Non-FCOC member additional per coach	\$50.00 = \$ _____
	TOTAL = \$ _____

Make check payable to: FCOC. **Mail to:** FCOC, PO Box 1527, Cortaro, AZ 85652 no later than June 15, 2019. (\$25 cancellation fee. No refunds after July 7.) In the Note section, please write "Amana, IA 2019." You should contact the campground directly for additional nights pre/post rally.

Ladies Social? ☐ Yes ☐ No Crafts? ☐ Yes ☐ No Attending Camp Freightliner? ☐ Yes ☐ No

CAMP FREIGHTLINER classes are available to rally attendees for an additional cost. Class dates: July 9-10 and July 11-12, 2019. Two people attending is \$285; one person attending is \$235 – includes 2 lunches, 1 dinner. You must register directly with Camp Freightliner at www.fccrv.com/owners/camp-freightliner after receiving your rally registration confirmation, as it will include the confirmation number necessary to register for the class. Spots not filled by rally attendees will be opened to the public.

Date Received: _____ Confirmation Sent: _____

COOS BAY, OREGON

September 23-27, 2019
\$350/Coach, \$241/Single
Each Extra Person: add \$100

THE MILL CASINO HOTEL & RV PARK

3201 Tremont Street
North Bend, OR 97459
(800) 953-4800
www.themillcasino.com



THREE RIVERS CASINO RESORT



COOS ART MUSEUM



OREGON DUNES NATIONAL RECREATION AREA



SUNSET BAY GOLF

2019 FCOC FALL RALLY

The Coos Bay Rally will host a dog parade, so get your puppies and pooches spiffed up and ready to strut! Also, please be sure to bring one wrapped gift (a value of \$10) to registration.

RALLY FEE INCLUDES, BUT IS NOT LIMITED TO THE FOLLOWING:

- 4 Nights Full Hook-Ups with 50-Amp Power
- 4 Dinners
- 3 Full Breakfasts
- 1 Continental Breakfast
- Hospitality Hours Each Day
- First Timers Orientation Seminar
- Professional Entertainment (one night)
- Games
- Camp Freightliner Classes Available at Additional Cost (held September 27-28 and September 30-October 1)

THINGS TO DO AND SEE IN COOS BAY

THREE RIVERS CASINO RESORT: This award-winning casino has two locations on the Oregon Coast – Coos Bay and Florence. Both offer comfortable accommodations, excellent food and great gaming. (www.threeriverscasino.com)

COOS ART MUSEUM: Located in downtown Coos Bay, the museum’s permanent collection includes a gallery dedicated to the short, but fascinating life of champion distance runner Steve Prefontaine, as well as contemporary American prints and Northwest art. (www.coosart.org)

COOS HISTORIAL AND MARITIME MUSEUM: South coastal Oregon’s rich history comes alive with a collection of over 50,000 objects and more than a quarter million images dating from pre-history through the 1970s. (www.cooshistory.org)

SIUSLAW NATIONAL FOREST: Stretching from “the forest floor to the ocean shore,” this national forest encompasses 630,000 acres between Coos Bay and Tillamook. Activities range from swimming and fishing to hiking and mountain biking. Catch a glimpse of a whale or marvel at the power of a waterfall. (www.fs.usda.gov/siuslaw)

OREGON DUNES NATIONAL RECREATION AREA: Stretching 40 miles along the Oregon coast, the dunes provide numerous recreational opportunities, including biking, hiking, fishing, canoeing, horseback riding and camping. (www.stateparks.com/oregon_dunes_national_recreation_area_in_oregon.html)

CAPE ARAGO STATE PARK: It’s said that in 1579, Sir Francis Drake sought shelter for his ship around Cape Arago. With breathtaking vistas and plenty of wildlife, the cape highlights the beauty and charm of Oregon’s southern coast.

SUNSET BAY GOLF: Professionally designed by John Zoller – who developed Spyglass and Poppy Hills – this par 36 course is as beautiful as it is challenging. Cart and club rentals are available. (www.sunsetbaygolf.com)

WATSON RANCH: This 18-hole course sits along the coast and is perfect for all levels of skill. The pro shop has equipment, clothing and services, and is managed by the resident pro golfer. (www.watsonranchgolf.com)

2019 FCOC FALL RALLY

SEPTEMBER 23-27, 2019

MILL CREEK CASINO RV PARK | 3201 TREMONT AVE | NORTH BEND, OR 97459 | (800) 953-4800

Rally Masters: Barbara Knutson | (561) 703-5284 | maxmandy0836@yahoo.com
Katherine Henley | (214) 704-2437 | vp.area.ops.W@fcocrv.org

Asst. Rally Masters: Cheryl & James Peek | (732) 552-6862 | jlpeek1948@yahoo.com

Member #: _____

Pilot: _____
Last First

Nickname for Badge: _____

Co-Pilot: _____
Last First

Nickname for Badge: _____

Will you have a guest(s) attending the rally? ☐ Yes ☐ No

If so, please give name(s) and age(s): _____

Address: _____
City State Zip Code

Primary phone #: _____ Cell phone #: _____

Email address: _____ Share your e-mail with other attendees? ☐ Yes ☐ No

Mfg/Model of Coach: _____ Length: _____

Any special events during the rally, e.g. birthdays or anniversary?: _____

First time at an FCOC rally? ☐ Yes ☐ No Volunteer to help with the rally? ☐ Yes ☐ No Handicap Parking? ☐ Yes ☐ No

FCOC – Freightliner Chassis Owners Club Member – Two people per coach	\$350.00 = \$ _____
FCOC – Freightliner Chassis Owners Club Member – One person per coach	\$241.00 = \$ _____
Each extra person in the coach over age 14 (Number of people _____)	x \$100.00 = \$ _____
Non-FCOC member additional per coach	\$50.00 = \$ _____
	TOTAL = \$ _____

Make check payable to: FCOC. **Mail to:** FCOC, PO Box 1527, Cortaro, AZ 85652 no later than August 15, 2019. (\$25 cancellation fee. No refunds after September 14.) In the Note section, please write "Coos Bay, OR 2019." You should contact the campground directly for additional nights pre/post rally.

Ladies Social? ☐ Yes ☐ No Crafts? ☐ Yes ☐ No Attending Camp Freightliner? ☐ Yes ☐ No

CAMP FREIGHTLINER classes are available to rally attendees for an additional cost. Class dates: September 27-28 and September 30-October 1, 2019. Two people attending is \$285; one person attending is \$235 – includes 2 lunches, 1 dinner. You must register directly with Camp Freightliner at www.fcocrv.com/owners/camp-freightliner after receiving your rally registration confirmation, as it will include the confirmation number necessary to register for the class. Spots not filled by rally attendees will be opened to the public.

Date Received: _____ Confirmation Sent: _____

register online
www.FCOCRV.org

FROLIC IN THE SUN RALLY - SEFFNER, FL

Linda Murphy, Rally Master

RALLY RECAP



It's always a wonderful time at the Seffner, FL, Lazydays RV Resort. The venue and staff proved to be wonderful hosts for our 104 coaches and provided us with coffee, wireless Internet, cable TV and more - all in conjunction with an absolutely beautiful campground.

Our Happy Hours and evening meals were held at the Rally Center. The food was delicious, and offered your choice of two entrees, vegetables, salad, bread, dessert and drinks. Breakfasts were held at the Resort's restaurant, Front Porch. Each evening, a 50/25/25 raffle was held and tickets were sold for our six big-ticket items. From start to end, everyone was kept busy with seminars, crafts, ladies socials, games and more!

Thursday, as the Cummins Engine and Onan Generator seminars took place, many of the female rally attendees adventured over to the Parkesdale Farm Market for delicious strawberry shortcake.

On Friday, while the men took part in the Allison Transmission seminar, around 30 ladies attended a craft session led by

Beth Digate. They made fantastic Mardi Gras masks adorned with feathers, sequins and beads. That evening, singer-impressionist Eric Kearnes delighted the crowd with music from singing legends of the 60's & 70's.

We honored the 52 veterans in attendance on Saturday, and presented a plaque to one member of each service branch of the military. Names were randomly selected by a drawing.



Many thanks to the following individuals, businesses and vendors that helped to make another FCOC rally enjoyable and successful.

- Rally Masters Roy and Kathy Hopper and Assistant Rally Masters Tom and Beth Digate - for their hard work in planning this event and acquiring door prizes, flyers and samples from vendors for the rally bags.
- Special thanks to Tom, who also led a very informative Social Media seminar for RVers.
- Freightliner Custom Chassis, Cummins Engine & Onan Generator, Allison Transmission, SkyMed, D & G Sales/ Wash/Wax All and Adventure Caravans - all of which provided seminars.
- Steve Batorson, FCOC Club President - for conducting our First Timer orientation with 64 first-timer coaches in attendance.
- Jerry Kapcsos and Jim Robertson - for leading the evening raffles.
- Cheryl Hinkle and James Peek - for conducting group activities including Card Bingo and Up Yours.
- Camping World, Dometic and Valterra Products - our big-ticket raffle item vendors.
- Julia Roberson, FCOC Club member - for the beautiful patriotic quilt she donated.
- All those that volunteered during the rally to help out at registration, serve meals, sell FCOC merchandise and raffle tickets, give out door prizes, or conduct crafts, games and seminars.

Make-A-Wish

Each FCOC Rally, our Club works to further our philanthropic efforts and give back by selecting an organization for which we work to raise money through 50/25/25 raffles and big-ticket raffle items. We are proud to announce that at the rally's end, we were able to gift Kristen Bladen of Make-A-Wish Central & Northern Florida a generous donation of \$2,220. Thank you to all who made this possible.



FEATURED ARTICLE

WINNEBAGO^{IND}



WINNEBAGO ENHANCES ACCESSIBILITY

Aiming to bring greater freedom and comfort to people traveling in wheelchairs or with limited mobility, Winnebago launched its Accessibility Enhanced line of motorhomes at the 2019 Florida RV Supershow in mid-January, including the Winnebago Forza 34T AE.

This mid-entry diesel pusher is perfectly suited for Winnebago's accessibility enhancements, taking advantage of the 340hp Freightliner XCS chassis. The Forza 34T AE features a wheelchair lift with an 800-pound capacity that allows wheelchair users to independently enter and exit the coach with a key-fob remote.

Other mobility-friendly improvements include:

- Expanded hallways and toilet areas
- Roll-in shower with assist bar (folding bench seat available)
- Accessible faucet controls and adjustable showerhead
- Reachable appliances, systems monitor, light and generator switch placement

The AE line marks Winnebago's move into mass producing vehicles for people with limited mobility.

"We are proud and thrilled to help Winnebago launch their AE line of motorhomes – and to truly help make our industry's products and lifestyle more accessible to everyone," says Jeff Sather, President of FCCC. "We share with Winnebago a commitment to making RVing an experience that allows more people and families to enjoy the outdoor lifestyle in ease and comfort."

For nearly 20 years, the XC series chassis from FCCC has been continuously refined to be the most innovative, most supported and best performing chassis in the industry. As the first choice of more luxury motorhome manufacturers than any other chassis, the majority of all Class A diesel motorhomes ride on XC. Offering power, space and versatility, the XC is designed for increased GVWR – up to 47,000 lbs. – plus floorplan flexibility through a variety of frame rail configurations.

MIGHTY HAULERTM



GOLF CART CARRIER

This solid steel carrier can safely hold up to 1,200 lbs, making it perfect to bring any gas or electric golf cart with your diesel camper. Only for fifth wheel trailers.

SPECIAL FEATURES INCLUDE:

- Separate entry and exit points – drive on, drive off
- Able to flat tow a car
- Tail lights and multiple tie-down points

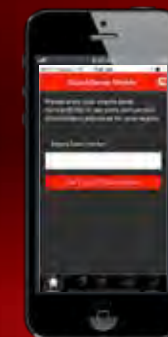
1-330-414-5788 • www.mightyhauler.com

PATENT PENDING • MADE IN THE USA



CUMMINS HAS RELEASED A NEW APP.

CUMMINS HAS INTRODUCED APPLE AND ANDROID VERSIONS OF ITS FREE QUICK SERVE ONLINE (QSOL) MOBILE APP. WITH YOUR ENGINE SERIAL NUMBER READY, SEARCH FOR "CUMMINSQUICKSERVEMOBILE" IN THE GOOGLE PLAY STORE OR "QUICKSERVE MOBILE" IN THE APPLE STORE.

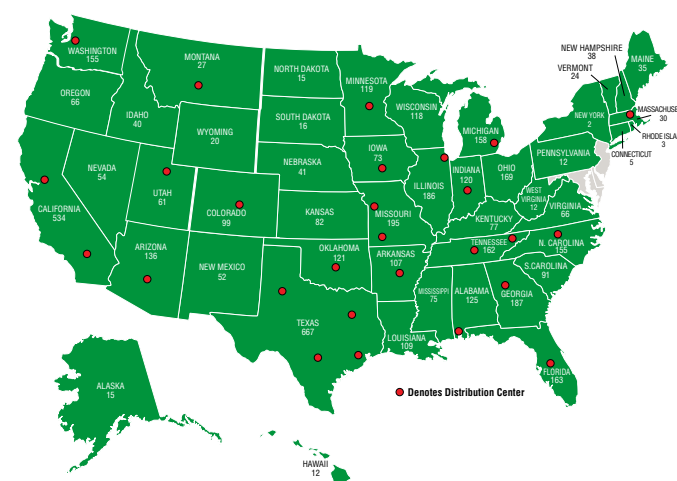


Once you've entered your serial number, the app provides access to Cummins parts options, parts catalogs and engine dataplate information for 15 million Cummins serial numbers (ESNs). It also includes a fault-code analyzer for Cummins electronic engines, which explains current fault codes, advises which fault codes are dependent on others and recommends which should be fixed first.

O'Reilly[®] AUTO PARTS[®]

PROFESSIONAL PARTS PEOPLE

4,829 Locations and Growing!



**Team
O'Reilly**

visit www.oreillyauto.com for state-by-state listings of O'Reilly locations

December 31, 2016
As reported on February 8, 2017

USE ACCOUNT #1284975



PARTNER SHOWCASE



JAYCO AND FCCC: PROVEN PARTNERSHIP IMPROVING THE MARKET

Last year, Jayco celebrated 50 years in RVing. Its reputation is the intersection of Old-World Amish craftsmanship and a willingness to innovate. Jayco continues to set the standard.

FCCC and Jayco's partnership is the result of two companies with similar backgrounds, parallel work ethics and a shared vision. The 2019 Seneca series rides on FCCC's front-engine S2RV and the coach is equipped with the first-ever, custom-built, one-of-a-kind "Super-C" diesel chassis dedicated to and manufactured exclusively for the RV market.

Backed by Daimler the S2RV was designed to maximize driver comfort with features including:

- Thoughtful Cab Configuration – large windshield, ergonomically designed dash & TRW adjustable steering column.
- Cummins B6.7 Engine – quiet, clean power that requires less maintenance than gas engines.
- Allison 3000MH 6-Speed Transmission – specifically designed for RV chassis.

- 100-gallon Fuel Tank & 10-gallon DEF Tank – more capacity means more miles between stops and fill-ups.
- Custom-tuned SACHS® Shocks – like those found on Mercedes-Benz®, Rolls-Royce and Maserati.
- FCCC's 24/7 Direct Factory Service – with accompanying mobile app provide an unrivaled network of more than 450 Freightliner-branded service locations nationwide.

The Seneca's interior is just as sophisticated as the chassis it rides on. Beautifully crafted, the coach offers a spacious pantry, bedroom storage, deluxe heated, remote-controlled side-view mirrors, keyless entry, slide-out awnings and shower skylight is proof of that – and, that's only the beginning.

To learn more visit FCCCRV.com/S2RV.

OVERLAND INSURANCE

Now in its 50th year, Overland Insurance Services continues to serve the needs of the recreational vehicle community by building custom insurance packages – at the lowest price possible – for motorhome and camper owners. Ronald Jarvie, certified insurance counselor, is the owner of the Arizona-based company that has been operated by his family since 1969.

Part of the excitement of the RV experience is being able to travel anywhere – a freedom that also includes navigating through unpredictable weather and hazardous driving conditions. Protecting a life-changing investment means understanding the entirety of the market.

Overland offers coverage for Class A, B and C motorhomes, luxury bus conversions, fifth wheel campers, travel trailers, and horse and utility trailers with living quarters. Its carriers will insure the finest of luxury motor coaches up to \$2 million in value and up to \$500,000 on towable campers and trailers.

While most RV insurance companies have discounts available, Jarvie warns against conflating the size of the bargain with the best coverage. "At Overland, we weigh all the costs and discounts of our carriers and present you with the best price," Jarvie says.

For more information, go to rvins.com.

For a free quote, go to myrvquote.com/fcoc/ or call 1-800-677-4027



DISCOUNTS INCLUDE:

Owner/Driver

- RV Club Member
- Home/Condo Ownership
- Good Driver (clear MVR)
- Premium Paid-in-Full CDL/Safety Course
- Original Owner
- 3+ Years Experience
- Multi Policy
- Prior Insurance
- Advance Quote/Purchase

Coach/Vehicle

- Audible Anti-theft Alarm
- Anti-lock Brake System
- Fire Suppression System
- Driver Side Airbag
- LPG Auto Shut-off
- Garaged Motor Coach

★ GET A FREE RV INSURANCE QUOTE ONLINE! ★



OVERLAND INSURANCE SERVICES

Overland Insurance has been a premier supplier of affordable Recreational Vehicle Insurance for over 40 years. Look no further when you want the best RV insurance coverage at the lowest possible cost.

Let Overland Insurance Services prepare a customized motor home or travel trailer insurance proposal and you'll be amazed how much coverage your premium dollar will buy.

SEASONAL ARTICLE



FREIGHTLINEAGE¹⁹ : THE RV EXPERIENCE

March 12-14, the entire RV industry was brought together to unveil the latest products, celebrate the RV lifestyle, and learn about the emerging consumer trends and growing consumer segments at the 2019 RVX: The RV Experience.

enables the company to shape the future – to take the next leap forward in heavy-duty durability and precision performance.

FCCC's RVX booth theme reflected this legacy. A carpeted walkway directed visitors through their Freightlineage – a timeline of FCCC's industry-leading innovations and features including V-Ride, UltraSteer, Roadwatch, OptiView and 2019's addition - coming this summer. Stay tuned!



As part of the Daimler family, Freightliner Custom Chassis Corp. (FCCC) shares a heritage of innovation and engineering excellence with Mercedes-Benz and Freightliner Trucks. That same heritage



SERVICE UPDATE



Brand new with this update, OwnerHQ gives you a profound collection of information, accessible at the tap of your finger.

THE REIMAGINED 24/7 DIRECT OWNER'S APP, NOW FEATURING OWNERHQ

Geared toward RV owners, the next generation of the 24/7 Direct app seamlessly connects you to a wealth of resources for your chassis and your journey. And as always, you'll be empowered to locate a dealer and contact FCCC 24/7 Direct factory technicians with one click – anytime, anywhere.

The home page provides an updated design and enhanced user experience, including the biggest – and most exciting – update to the app: OwnerHQ. In addition, your "Email FCCC" and "Service Survey" forms are new and improved – meaning a more user-friendly interface that includes auto-fill technology. The dealer locator utilizes location-based technology to automatically list dealerships closest to you at any given time.

OWNERHQ: WHAT IT DOES FOR YOU

MY VEHICLE: allows you to create a login and keep track of any maintenance you've had performed on your motorhome. And since it syncs automatically, you'll never lose the information – even if you get a new mobile phone.

CALENDAR: keeps track of all upcoming RV events, including links to specific event pages for more detailed information.

DASH LIGHTS: offers a complete library of warning lights that you may see on your motorhome's dash, allowing you to self-diagnose the issue – saving time, energy and money.

MAINTENANCE CHECKLIST: provides a thorough guide to suggested maintenance at 6,000, 15,000, 30,000, 45,000 and 60,000 miles.

LIBRARY: lists all owner manuals and warranty information so you never have to go digging for decade-old papers again.

NEWS: will be included in the next update.

FAQS: gives you access to the most frequently asked questions by RV owners just like you. The search bar makes the process quick and easy.

FACTORY SERVICE REQUEST: allows you to request an appointment from your mobile phone – wherever you are.

AVAILABLE NOW

The 24/7 free mobile app with a full suite of owner resources is available for Apple and Android devices. Search: Freightliner 247. If you've already downloaded the app, go to your app store to update.





Get to Know Your Chassis.

NEW! PAY FOR CAMP FREIGHTLINER WHEN YOU REGISTER ONLINE!

When you register for Camp Freightliner on FCCCRV.com, you can now pay right away by debit or credit card, or your PayPal account.

2019 CLASS SCHEDULE UPDATED ON FCCCRV.COM

To register, visit FCCCRV.com and click on "Camp Freightliner" on the home page.

2019 CLASSES AT FCOC RALLIES

We've made special arrangements with FCCC to have a full Camp Freightliner at a number of our 2019 FCOC rallies. They're just like the classes you'd take in Gaffney, but you don't have to go to South Carolina!

When you register for the rally at FCOCRV.org, you'll receive a special code to enter when you sign up for Camp Freightliner at FCCCRV.com/owners/camp-freightliner.



TOUR THE FCCC FACTORY

While you're in town for Camp Freightliner, we encourage you to tour the factory to see how our chassis come together.

At approximately 200,000 sq. ft., the FCCC Factory is a must-see for Freightliner Chassis owners. Just 4.5 miles from our Service Center and six miles from the KOA Campground, the FCCC Factory offers a daily tour Monday-Friday with registration beginning at 10:15 a.m. in the main lobby. Each tour lasts 45 minutes to an hour, and you will see everything from an engine being up-fitted with accessories to a completed chassis ready to roll out the door to the body builder.

Time for a factory tour is not included in the Camp Freightliner itinerary, so plan an extra day before or after class for this one-of-a-kind experience. You won't want to miss it!

552 Hyatt St.
Gaffney, SC 29341
(864) 487-1700
fccservice@daimler.com



CAMP FREIGHTLINER

We had some wonderful groups join us for Camp Freightliner who were very eager and excited to learn about all the technology we've developed recently, including OptiView dash, RoadWatch and our all-new push-to-start key FOB, just to name a few. There are many Camp Freightliner opportunities in the near future and we hope to see you there!



CAMP FREIGHTLINER I

Take advantage of FCCC's comprehensive and captivating two-day training session in Gaffney, SC, to learn about the benefits of driving a motorhome built on an FCCC chassis. This is not a hands-on workshop, but you will spend time at a bare chassis to become more familiar with the features. Class size is limited and filled on a first-registration basis, so sign up today!

Topics:

- Air brake system
- Electrical system
- Maintenance intervals
- Weight distribution
- Vehicle storage
- Plus much more!

Fee: \$245.00 for single attendance or \$295.00 for driver and co-pilot for the two-day class.

Please feel free to bring your laptops to class, so you can follow along with the Internet portion of the course.



CAMP FREIGHTLINER II

Camp Freightliner II is a Service & Maintenance class held at the Factory Service Center. This is not a hands-on course, but pairs you with a service technician in the service bay to observe the proper service techniques and ask questions about the chassis.

Fee: \$159.00+ cost of your scheduled maintenance (Covers safety and protective equipment, lunch and other supplies).

Camp Freightliner I is a prerequisite to this class.

There is a minimum level of routine service required for this class, which will be verified upon scheduling of service.

SIGN UP FOR A
CAMP FREIGHTLINER CLASS
ONLINE AT **FCCCRV.COM**.



TURNPIKE
BRAINTEASERS

SUDOKU

			6		9			
	7	3						
	1	4			5			8
					8		1	
7		5					2	
		9	7				5	
	5	6			1			
3				4				9

WORD SEARCH

ADVENTURE	EVERGREENS	NAPA
ANIMALS	GEAR	NATURE
ARCHES	GRAND	RALLY
BIG SUR	CANYON	SMOKYS
BOOTS	HAMMOCK	SMORES
BUG SPRAY	HAT	SPRING
CAMPFIRE	HIKE	YELLOWSTONE
CANOE	HILL CITY	YOSEMITE
CANTEEN	HISTORY	
CANTON	HOT SPRINGS	
CARAVAN	MAP	
ESTES PARK	MESA	

CANTONHJAESPRINGNAPA
JDAYYBVAYHVDQGHSKAZG
DPBQTEISMTKEHZRYRNGR
GDFNCQLGMMRYRCBRMIEA
EOHHAIZLSOOIEGHZLMAN
WOIRMVYLOURCTKRIIARD
TISXPBCPMWREKCNEELOCL
IVTMFLOXABSDSAAWESEEA
XHOJIQOOPKHTOXRNUNAN
EHRMRTGRTTGOOBQCTMSY
HIYRENEWRS PF DNVMHETO
QKYOSEMITEGRYDEKJEEN
OEAPYADVENTUREWPPLSN
CANOEQAUDCMHIBNPVJAL
JOHOTS SPRINGSRALLYHAT
YMDXSYYMCARAVANTPYHM
BFEG LCKTWNATUREQYRKI
MVXSAEODIHPVHILLCITY
DSDOALBUGSPRAYAESKGE
SMOKYSNIGESTESPARKWJ

SEE PAGE 46 FOR THE KEYS.

FEATURED
MEMBER

GETTING TO KNOW PATTEE PEREZ –
FCOC SECRETARY

Born and raised in California, Pattee and her husband Chris purchased their first Class A just over three years ago. Though relatively new to the RV lifestyle, their love for travel, nature and one another began many decades ago.

Celebrating 52 years together (married 51) this year, the life-long adventuring couple has truly done it all – from tents and trailers to fifth wheels and boats. But according to them, nothing compares to taking your home on the open road.

“Going across bridges, seeing a skyline of huge mountains, taking in the beautiful fall colors – everything our home in California is missing, we get on the road,” said Pattee.

In their first three years, Chris and Pattee crossed 21 states off the bucket list – and have no plans of slowing down any time soon. Though admittedly difficult, their able to identify a few of her favorite places thus far. “The Sierra Nevada Mountains, the Oregon Coast, Coeur d’Alene and Mount Rushmore are just breathtaking,” she said. “When you walk up and see that president’s faces for the first time, you have a whole new understanding of the word ‘speechless.’”

She added that the Grand Canyon is definitely up there, too. “We stayed in a beautiful park, met so many nice people and were amazed at the nature,” said Pattee. “The moose, antelope and deer are all right outside your door!”

This year, they’re preparing for an annual trip to Mammoth Lake with a group of 15 RVs, a hike to Arkansas to connect with old high school friends, adventures in both New Mexico and Tennessee, and will attend the FCOC rallies in Yuma, Amana and Coos Bay.

Pattee and Chris always knew they wanted to be RVers. As for how they got involved with our Club, however, is kind of a funny story. While at

the dealership signing the papers to make their motorhome purchase final, they were handed an FCOC brochure. To their surprise, the couple beside them – FCOC members themselves – noticed and began explaining the rallies, Fireside Chats, classes and more.

“When we got home, Chris looked it up and said, ‘This is a great way to learn about our rig, to meet wonderful people and to really learn how to RV,’” said Pattee. That night, they booked their first FCOC Rally where they signed up to become members of the Club.

Though the new adventures and bucket list destinations are exceeding their expectations, Pattee says their favorite part of this experience so far is the people. “We’ve met so many wonderful, amazing individuals,” she said. “The rally entertainers are incredible. The volunteers put in SO much work. I’m doing things I never thought I’d do and seeing things I never thought I’d see – all with some of the greatest people we’ve ever met. We’re truly grateful for every day.”

PATTEE’S LEARNED SOME VALUABLE
LESSONS ALONG THE WAY:

- Pack light. “You don’t need your whole closet or entire refrigerator stuffed into your RV. If a need arises, there is always store along your route.”
- Log your travel. “Keep track of miles driven, places you stopped, towns you enjoyed. Either as a resource or a memory – I believe it’ll all be worth having one day.”
- Take your time. “We’ve made it a goal this year to do less hurrying, to stop driving by 4pm and to take in our surroundings more – even if it’s an unplanned pit stop, if it’s a place you’d never expect to be or if you have no idea where you are. Every experience is a memory.”



ROADSIDE RECIPES


TIP:

Brown rice can be substituted with white rice or quinoa.

Recipe and Photo by Damn Delicious.

SLOW COOKER STUFFED PEPPERS

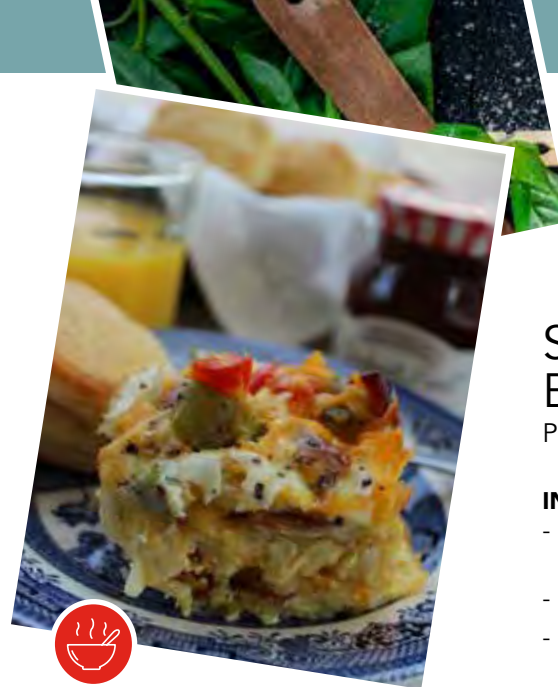
Prep time: 15 min Cook time: 4 hours 15 min Servings: 6

INGREDIENTS:

- 1 lb. lean ground beef
- 1½ cups cooked brown rice
- 1½ cups shredded cheddar cheese, divided
- 1 (15 oz) can black beans, drained and rinsed
- 1 cup salsa (homemade or store-bought)
- 1 cup corn kernels (frozen, canned or roasted)
- 2 tbsp. chopped, fresh cilantro
- 1 tsp. cumin
- ½ tsp. chili powder (or more, to taste)
- Kosher salt and freshly ground black pepper (to taste)
- 6 bell peppers (tops cut, stemmed and seeded)
- 2 tbsp. sour cream (optional)

DIRECTIONS:

1. Brown beef in large skillet.
2. Lightly coat slow cooker with nonstick spray.
3. In a large bowl, combine beef, rice, 1-cup cheese, black beans, salsa, corn, cilantro, cumin and chili powder. Season with salt and pepper, to taste.
4. Spoon filling into each bell pepper and place in slow cooker.
5. Cover and cook on low heat for 3-4 hours or on high for 2-3 hours until peppers are tender.
6. Uncover and top with remaining ½ cup cheese. Cover and cook on low heat for an additional 10-15 minutes, or until cheese has melted.
7. Drizzle with sour cream and enjoy!


TIP:

Add jalapeños or green chiles for a kick and serve with salsa, avocado and sour cream.

Recipe and Photo by Cincy Shopper.

SLOW COOKER BREAKFAST CASSEROLE

Prep time: 15 min Cook time: 4 hours 15 min Servings: 6

INGREDIENTS:

- 1 bag (32 oz) frozen hash brown potatoes
- 1 lb. bacon
- 1 small onion, diced
- 8 oz shredded sharp cheddar cheese
- ½ red bell pepper, diced
- ½ green bell pepper, diced
- 12 eggs
- 1 cup milk

DIRECTIONS:

1. Cut bacon into small pieces, cook and drain (you can use precooked bacon to speed up this process).
2. Starting with half of the bag of hash browns on the bottom of your slow cooker, you will layer the ingredients. The next layer will be half of your bacon followed by half the diced onion, half of the green and red peppers, and half of the cheese.
3. Cover with the remaining hash browns and repeat the layers.
4. In a medium-size bowl, beat eggs and milk together. Salt and pepper to taste and pour the mixture over your casserole in the slow cooker.
5. Cook on low for 4 hours or on warm for 8 hours.

HERSHEY BAR BROWNIES

Prep time: 25 min Cook time: 1 hour Servings: 12

INGREDIENTS:

- 2 boxes Betty Crocker brownie mix
- 3 regular Hershey milk or dark chocolate bars

DIRECTIONS:

1. Preheat oven to 350 degrees.
2. Prepare brownie mix according to box directions.
3. Pour half mixture into 9x13 baking dish.
4. Place Hershey bars, side by side, atop mixture.
5. Pour remaining half of brownie mix over the chocolate bars.
6. Bake for one hour; checking the center with a knife or toothpick.


TIP:

Swap out the Hershey bars with your favorite indulgence – peanut butter cups, Oreo cookies and thin mints all work great!

Recipe Submitted by Katherine Henley.

SUDOKU

5	2	8	6	7	9	3	4	1
6	7	3	8	1	4	5	9	2
9	1	4	2	3	5	6	7	8
4	3	2	9	5	8	7	1	6
7	9	5	1	6	3	8	2	4
8	6	1	4	2	7	9	3	5
1	4	9	7	8	6	2	5	3
2	5	6	3	9	1	4	8	7
3	8	7	5	4	2	1	6	9

WORD SEARCH



DON'T LET *YOUR* MEMBERSHIP EXPIRE!

Please look at your label on the back of this newsletter to see if your membership is about to expire. We send out reminders at least two months in advance of your expiration, both by email and by mail, to provide adequate time to renew your membership. Dues are \$15.00/year or \$70.00 for five years. See Membership Application on page 47.

To access by Internet, visit the website at www.FCOCR.V.org.

After logging in, you have the ability to conveniently renew your membership using PayPal. Simply click "Renew/Pay Dues" in the top right corner of your screen.

You may also update your membership and personal information by selecting "View/Update Your Profile."

PLEASE NOTE: If you are logging into the new site for the first time, your password is the same as it was for the old site. If you've forgotten your password, click "Forgot Password" under the login fields.

Disclaimer: FCOC is not responsible for personal statements, opinions or representation advanced in papers, newsletters, web site, in discussions at any meetings or its Internet site and Discussion Forums, or the validity of statements contained in any advertisements.



GET RV SOUL BY EMAIL!

You may request to have our newsletter delivered by email, especially if you travel frequently or if your mail is forwarded more than once a year. You will receive the newsletter earlier than those mailed, and they won't pile up in your motorhome. You will receive an email when the newsletter is ready to be viewed. Recent as well as previous issues of Freightliner Flyer are available for viewing and printing on the website.

For those who do not have email, please make sure we have your correct mailing address – especially those of you who have a seasonal address. We are experiencing a large number of newsletters returned. Time, money and postage rates are affected when they are undeliverable.

Thank you for helping us do a better job of getting important FCOC news and current updates to you! We want you to be in the know!



MEMBERSHIP APPLICATION

DATE _____ ☐ NEW ☐ RENEWAL

MEMBER ID _____ OR APPLICATION DATE _____

If you have an FMCA or FCOC number, please use it here. If not, one will be issued to you.

NAME
FIRST _____ LAST _____ NICKNAME _____

CO-PILOT
FIRST _____ LAST _____ NICKNAME _____

PRIMARY PHONE (____) _____ CELL PHONE (____) _____

ADDRESS (PRIMARY)

CITY _____ STATE _____ ZIP _____ COUNTRY _____

ADDRESS (SEASONAL)

CITY _____ STATE _____ ZIP _____ START & END DATE _____

E-MAIL _____

NEWSLETTER DELIVERY (CHECK): ☐ ELECTRONIC ☐ MAIL DELIVERY

CHASSIS MANUFACTURER (CHECK ONE): ☐ FREIGHTLINER ☐ OSHKOSH ☐ JOHN DEERE

MANUFACTURER OF MOTOR HOME _____ MODEL _____

YEAR _____ LENGTH (FT.) _____ VIN # OF CHASSIS (REQUIRED FOR MEMBERSHIP)

PURCHASE DATE ARE YOU THE ORIGINAL OWNER? ☐ YES ☐ NO

DUES ARE \$15.00 PER YEAR OR FIVE YEARS FOR \$70.00 U.S. DOLLARS

SEND TO: FREIGHTLINER CORPORATION – C/O FCOC
552 HYATT STREET, GAFFNEY, SC 29341
(864) 487-1700

ONLINE MEMBERSHIP UPDATE OR RENEWAL

Anyone can access our website without logging in by going to www.FCOCRV.org. When a Member wants to update their member profile or pay their dues, they will need to log in with two pieces of information: a membership number and a password. When a Member has difficulty signing in, it is usually either because they forgot to include the letter "F" at the front of their membership number, or because they forgot their password. If a new Member joins via our website, they will provide their own password at that time. New Members who apply by mail will receive their password by email when their registration information has been entered. Members can change their password at any time by logging in and updating their profile.

TO JOIN FCOC:

1. Select "Join FCOC" on the home page or in the top right corner of any page on the site.
2. Select the number of years you'd like to commit to and pay for.
3. Fill out all relevant fields. Those with an asterisk (*) must be completed.
4. Make note of the number in the "Username - Member ID" field. This is your FCOC ID number, which you'll need to log in to the site.
5. When you're finished, select your payment method and click "Sign Up" at the bottom. If you navigate away from this screen before clicking "Sign Up," your input will not be recorded and you will be required to start over.
6. Complete your payment information and follow instructions to submit.

TO PAY DUES:

1. Sign in using the "Membership Log In" fields on the home page or the "Sign In" link in the top right corner of any page on the site.
2. Once you've signed in, select "Renew / Pay Dues" in the upper right corner of your screen.
3. Select the number of years you'd like to commit to and pay for.
4. Double-check that the information that populates in the form fields is correct. If it is not, change anything you need to, and the updated information will be stored in the database.
5. Select your payment method and click "Sign Up" at the bottom. If you navigate away from this screen before clicking "Sign Up," your input will not be recorded, and you will be required to start over.
6. Complete your payment information and follow instructions to submit.

If you do not have access to a computer or email, you may use the application in this newsletter on page 47.
If you have any problems, please let me know. My contact information is on page 4.

MARY COSTIGAN, VP Membership



Mens Crimson Shirt
Available in
Small To 4X



Ladies Crimson Shirt
Available in Small
To 2X



Ladies Grey T-Shirt
Small to 4X



Mens Grey T-Shirt
Small to 4X



FCOC Logo Hat



Ladder Bracket for
Logo Egg

FCOC LOGO MERCHANDISE



FCOC Logo Ladder



Smaller Clinging
Front Window
Plaque

DATE:	CHECK #:	ITEM	QTY	AMOUNT	TOTAL
MEMBER ID#		Ladies Crimson Small		\$25.00	
NAME		Ladies Crimson Medium		\$25.00	
ADDRESS 1		Ladies Crimson Large		\$25.00	
ADDRESS 2		Ladies Crimson X-Large		\$25.00	
CITY	STATE:	Ladies Crimson XX-Large		\$25.00	
ZIP CODE		Mens Crimson Small		\$25.00	
Checks payable to "FCOC" and send check to: Mary Costigan FCOC Logo Merchandise 900 Bradford Court San Jacinto, CA 92583-6530 Cell: (951) 452-2999 E-Mail: mary.costigan2@gmail.com		Mens Crimson Medium		\$25.00	
		Mens Crimson Large		\$25.00	
		Mens Crimson X-Large		\$25.00	
		Mens Crimson 2X-Large		\$25.00	
		Mens Crimson 3X-Large		\$25.00	
		Mens Crimson 4X-Large		\$25.00	
		Ladies Grey T-Shirt Small		\$15.00	
		Ladies Grey T-Shirt Medium		\$15.00	
		Ladies Grey T-Shirt Large		\$15.00	
		Ladies Grey T-Shirt X-Large		\$15.00	
USPS SHIPPING CHARGES		Ladies Grey T-Shirt 2X-Large		\$15.00	
		Ladies Grey T-Shirt 3X-Large		\$15.00	
		Ladies Grey T-Shirt 4X-Large		\$15.00	
		Mens Grey T-Shirt Small		\$15.00	
		Mens Grey T-Shirt Medium		\$15.00	
1 to 4 ITEMS	8.00 USD	Mens Grey T-Shirt Large		\$15.00	
		Mens Grey T-Shirt X-Large		\$15.00	
5 + ITEMS	\$14.35 USD (in one package)	Mens Grey T-Shirt 2X-Large		\$15.00	
		Mens Grey T-Shirt 3X-Large		\$15.00	
		Mens Grey T-Shirt 4X-Large		\$15.00	
Effective: 2/16/2019		Mens Grey T-Shirt Small		\$15.00	
		Mens Grey T-Shirt Medium		\$15.00	
		Mens Grey T-Shirt Large		\$15.00	
		Mens Grey T-Shirt X-Large		\$15.00	
		Mens Grey T-Shirt 2X-Large		\$15.00	
		Mens Grey T-Shirt 3X-Large		\$15.00	
		Mens Grey T-Shirt 4X-Large		\$15.00	
		FCOC Logo Hat		\$15.00	
		FCOC Logo Plaque		\$20.00	
		FCOC Logo Window Plaque *		\$5.00	
* 1 Ladder Plaque Holder or 1 FCOC Window Plaque, does not count as an item unless either are ordered by themselves. Every 2 additional Holders or Window Plaque count as 1 additional item.		Plaque Ladder Holder *		\$10.00	
		TOTAL # OF ITEMS		Sub-Total	
				Shipping	
		TOTAL IN US DOLLARS		Order Total	

CANADA - CALL OR EMAIL FOR SHIPPING PRICE

THANK YOU FOR YOUR ORDER & SUPPORT

ADVENTURE AWAITS...

LET US TAKE YOU THERE!

Celebrating
25 YEARS OF EXCELLENCE IN GUIDED RV TOURS & RALLIES
UNITED STATES • ALASKA • CANADA • OVERSEAS

Request Your **FREE** RV Vacation Guide

CALL 936.327.3428

AdventureCaravans.com

Follow Us   

OFFERS FROM OASIS AND PARTICIPATING DEALERS

Freightliner Custom Chassis Corporation (FCCC) and select Freightliner Oasis dealerships around the country have initiated a program offering members of the Freightliner Chassis Owners Club (FCOC) special pricing on service labor and service parts.

The program offers current FCOC members the following discounts:
10% OFF POSTED LABOR RATES & 10% OFF PARTS.

It is important that you do the following; if you don't, you may not get the discount and it will be your own fault!

You MUST tell them you are an FCOC member up front, request the discount and identify yourself by showing your current membership card. Ask to get a copy of your billing with the discount on it once your work is done.

In developing the Oasis Dealer Discount Program, all Oasis Dealers were contacted and invited to participate. But, participation in the Oasis Dealer Discount Program is a business decision made by each individual Oasis Dealer.

If the Oasis Dealer you wish to use is not on the list of participating dealers, we would encourage you to let them know of your desire to have them participate in the program. Dealers wishing for more information about the program should contact James Peek: phone (916) 870-9322, email VP.BUSDEV@FCOCRV.ORG. Also, if you have any problem with any Oasis Dealer on the list, let Tom James know, and he will try to help.

As a reminder, it's up to you to **ask first** for the discount, not after.

PLEASE REMEMBER: THESE OASIS DEALERS ARE SUPPORTING FCOC, SO PLEASE GO TO THESE DEALERS ONLY.

+ Some Dealers below offer hook ups for our RV Members. Look for the symbol to see which Dealers offer which hook ups:

**W: WATER E: ELECTRICITY S: SEWER D: DUMP STATION
DP: DOGGIE PARK L: LOUNGE RV**

PARTICIPATING OASIS NETWORK DISCOUNT PROGRAM CENTERS:

+ **Freightliner of Arizona**
9899 W. Roosevelt St.
Tolleson, AZ 85353
(623) 907-6642
Ser. Mgr. Larry Winiewicz
W, E, S, DP, L

TAG Truck Center
5712 Commerce Square
Jonesboro, AR 72401
(870) 972-8588
Ser. Mgr. Brian Carter

Truck Centers of Arkansas
11700 Valentine Rd.
North Little Rock, AR 72117
(800) 562-8875
Ser. Mgr. John Siverd

Truck Centers of Arkansas
2675 W. Sunset Blvd.
Springdale, AR 72762
(800) 495-4551
Ser. Mgr. Bill Partain

Delta Truck Center
S. Harlan Rd.
French Camp, CA 95231
(800) 400-4161

Sacramento Truck Center
100 Opportunity St.
Sacramento, CA 95838
(916) 286-2000
(800) 485-8311
Ser. Mgr. Lawrence Cowan

San Diego Freightliner
6006 Miramar Rd.
San Diego, CA 92121
(877) 454-5456
(619) 564-3700
Ser. Mgr. Gene Hust

Southern Connecticut Truck Center
15 East Industrial Rd.
Branford, CT 06405
(800) 448-8480
Ser. Mgr. Michael Beavton

Freightliner of Hartford
199 Roberts Street
East Hartford, CT 06108
(860) 289-0201 x1118
Ser. Mgr. Scott Thayer

+ **Orlando Freightliner**
2455 S. Orange Blossom Trail
Apopka, FL 32703
(407) 295-3846
Ser. Mgr. Lee Feeser
W, E, DP, L

Tom Nehl Truck Co.
383 SW Arrowhead Terr.
Lake City, FL 32024
(904) 389-3653
(386) 755-9527
Ser. Mgr. Rex Steven

Ocala Freightliner
3950 W. Hwy. 326
Ocala, FL 34482
(352) 840-0070
Ser. Mgr. Scott Pauley

Truck Centers, Inc.
300 East Ashland St.
Morton, IL 61550
(309) 263-4240
(800) 397-4292
Ser. Mgr. Cathie Jenkins

Truck Centers, Inc.
2981 E. Singer
Springfield, IL 62703
(217) 525-1280
(800) 786-1280
Ser. Mgr. Charlie Melvin

Truck Centers, Inc.
747 E. Taylor St.
St. Louis, MO 63147
(314) 381-3800
Ser. Mgr. Neil Yahl

Truck Centers, Inc.
2280 Formosa Rd.
Troy, IL 62294
(800) 669-3454
Ser. Mgr. Paul Buehrle

Stoops Freightliner Quality Trailer, Inc.
6105 Columbus Ave.
Anderson, IN 46013
(765) 644-1400
(877) 881-7993
Ser. Mgr. Doug Dau

Stoops Freightliner Quality Trailer, Inc.
12247 Declaration Dr.
New Haven, IN 46774
(260) 749-8587
(877) 518-2065
Ser. Mgr. Jeff Bouck

Stoops Freightliner Quality Trailer, Inc.
1851 W Thompson Rd.
Indianapolis, IN 46217
(317) 788-1533
(877) 518-8221
Ser. Mgr. Mike Miller

Truck Country Cedar Rapids
700 29th Ave. SW
Cedar Rapids, IA 52406
(319) 365-0531
(800) 332-6158
Ser. Mgr. Chris Flockhart

Truck Country Quad Cities
2350 W. 76th St.
Davenport, IA 52806
(563) 445-5870
Ser. Mgr. Darin Bohr

Truck Country Decorah
1653 State Highway 9
Decorah, IA 52101
(563) 382-6551
(888) 545-9297
Ser. Mgr. Ray Clark

Truck Country Dubuque
10785 Route 61 South
Dubuque, IA 52003
(563) 556-3775
(800) 553-3642
Ser. Mgr. Ray Clark

Harrison Truck Centers
101 Plaza Drive Elk Run
Heights, IA 50707
(800) 582-5789
Todd Rathbone

Harrison Truck Centers
PO Box 1708
Waterloo, IA 50704
(319) 234-4453
Ser. Mgr. Rodd Rathnone

TAG Truck Center
215 Campbell Dr.
Calvert City, KY 42029
(270) 395-8200
Ser. Mgr. Randy Mathis

Kent-Mitchell Bus Sales & Svc
41430 East I55
Hammond, LA 70403
(985) 419-8347
Ser. Mgr. Emile Musso

Baltimore Freightliner
2723 Annapolis Rd.
Baltimore, MD 21230
(410) 685-4474
Ser. Mgr. Jessica Levine

Freightliner of Grand Rapids
5285 Clay Ave SW
Grand Rapids, MI 49548
(800) 968-9680
Ser. Mgr. Mark List

Freightliner of Kalamazoo
53449 Main St.
Kalamazoo, MI 49071
(800) 968-9680
Ser. Mgr. Mark List

Truck Center Inc.
2880 Hwy 67 South
Farmington, MO 63640
(573) 712-8817
Ser. Mgr. Andy Vittoe

TAG Truck Center
3792 Hwy 67 No
Poplar Bluff, MO 63901
(573) 785-0193
Devin Russom

TAG Truck Center
1485 Hwy 177
Jackson, MO 63755
(573) 339-1890
Ser. Mgr. Jeff Runnels

TAG Truck Center
307 Lynual Drive
Sikeston, MO 63810
(573) 471-7100
Ser. Mgr. Mark Riney

Truck Center Inc.
747 E Taylor Ave.
St Louis, MO 63147
(800) 325-8809
Ser. Mgr. Larry King

TAG Truck Center
2448 McCullough Blvd
Tupelo, MS 38826
(662) 844-3262
Ser. Mgr. Gary Greszier

Albuquerque Freightliner
12901 I-40W Frontage Rd.
Albuquerque, NM
(505) 833-1000
Ser. Mgr. David Robinson

Hans' Freightliner
14520 Broadway Avenue
Cleveland, Ohio 44125
Phone: (216) 581-0046 Ext. 181
Cell: (440) 334-7262
Fax: (216) 581-8610
Sales Rep. Bryan Grega

Stoops Freightliner Quality Trailer, Inc.
7800 Center Point 70 Blvd.
Dayton, OH 45424
(937) 236-4092
(877) 518-0112
Ser. Mgr. Mark Vonderhuval

TSI Western Star
385 South Bailey Rd.
North Jackson, OH 44451
(330) 538-3850
(800) 388-3850
Ser. Mgr. Kevin Shaulis

Premier Truck Group of Oklahoma City
5301 I-40 West
Oklahoma City, OK 73128
(877) 621-0428
Ser. Mgr. Josh Meyers

Premier Truck Group of Tulsa
5104 W. 60th St.
Tulsa, OK 74107
(866) 599-8351
(918) 445-5300
Ser. Mgr. Ron Beaver

Fyda Freightliner Pittsburgh, Inc.
20 Fyda Dr.
Canonsburg, PA 15317
(800) 393-2556
Ser. Mgr. Brian Conkle

+ **Premier Truck Group of Knoxville**
1413 Everett Rd.
Knoxville, TN 37932
(865) 824-2400
Ser. Mgr. Dwyane Overton
E, DP, L

TAG Truck Center
112 E. L. Morgan Drive
Jackson, TN 38305
(731) 423-3782
Ser. Mgr. Kevin McAdams

+ **TAG Truck Center**
4450 American Way
Memphis, TN. 38118
(800) 264 0336
Ser. Mark Sampson
E, DP, L

+ **Tranwest Truck Center**
10150 Cherry Ave
Fontana, CA. 92335
(909) 770 5623
W, E, S, D, DP

Premier Truck Group of Amarillo
2210 South Whitaker Rd.
Amarillo, TX 79118
(806) 374-1033
(800) 753-1556
Ser. Mgr. Paul Tarbet

Premier Truck Group of Ardmore
3601 12th Ave NW
Ardmore, OK 73401
(580) 223-2233

Premier Truck Group of Chattanooga
kshumake@premiertruck.com
Phone: (706) 937-3700
Fax: (706) 937-6730
Ser. Mgr. Ken Shumake

+ **Premier Truck Group of Dallas**
4200 Port Blvd.
Dallas, TX 75241
(800) 580-2620
(972) 225-4300
Ser. Mgr. Justin Griffin
W, E

Premier Truck Group of Dallas
3040 Irving Blvd
Dallas, TX 75247
(214) 631-6213

Premier Truck Group of Fort Worth
1804 NE Loop 820
Fort Worth, TX 76106
(800) 580-9101

Premier Truck Group of North Texas
1610 North Collins Freeway
Howe, TX 75459
Ser. Mgr. Donald Ballance

Premier Truck Group of Odessa
1100 South Grandview
Odessa, TX 79761
(800) 687-3381

Premier Truck Group of Oklahoma City
5301 I-40 West
Oklahoma City, OK 73128
(877) 621-0428
Ser. Mgr. Josh Meyers

Premier Truck Group of Tulsa
5104 W. 60th St.
Tulsa, OK 74107
(866) 599-8351
(918) 445-5300
Ser. Mgr. Ron Beaver

Freightliner Northwest
524 Jacks Lane
Mt. Vernon, WA 98273
(360) 848-0472
Ser. Mgr. Jonathan Callis

Truck Country Madison
4195 Anderson Rd.
DeForest, WI 53532
(608) 249-1900
(800) 837-7367
Ser. Mgr. Jerry Brickheimer

River States Truck & Trailer, Inc.
6124 Chuck Lane
Eau Claire, WI 54703
(715) 874-4700
(800) 944-5973
Ser. Mgr. Henry Le Bakken

Truck Country of WI
2401 Progress Way
Kaukauna, WI 54130
(800) 236-5271
Ser. Mgr. Matt Lueneburg

River States Truck & Trailer, Inc.
3959 N. Kinney Coulee Rd.
LaCrosse, WI 54601
(608) 784-1149
Ser. Mgr. Steve Kemp

Truck Country Marinette
2890 Cleveland Ave.
Marinette, WI 54143
(715) 735-7020
(888) 315-5995
Ser. Mgr. Justin Gleiter

Truck Country Milwaukee
2222 W Ryan Rd.
Oak Creek, WI 53154
(414) 761-3384
(800) 236-6061
Ser. Mgr. Tom Foecker

River States Truck & Trailer, Inc.
690 Starr Lane
Roberts, WI 54023
(612) 339-1115
(866) 994-3122
Ser. Mgr. Glenn Zimmerman

Truck Country Wausau
2435 Trailwood Lane
Rothschild, WI 54474
(715) 359-9989
(800) 348-9195
Ser. Mgr. Mark Mattila

Truck Country
119 State Hwy 11
Shullsburg, WI 53586
(608) 965-4462
(800) 362-1313
Ser. Mgr. Mike Banghart

If you are a Dealer and have any of these items and would like to be put on this list, contact Tom James at vp.busdev@fcocrv.org.



CHANGE SERVICE REQUESTED

Presort Standard
U.S. Postage
PAID
Cincinnati, OH
Permit No. 6523

FCOC

PO Box 1527 | Cortaro, AZ 85652



ALLISON TRANSMISSIONS
800-524-2303



GREAT SUPPORTERS



CUMMINS ENGINE CO.
(800-343-7357)
800-DIESELS



800-TIRE-HELP
(800-847-3435)

If you are part of our Freightliner Custom Chassis' family and want to see your company proudly advertised on this FULL COLOR back page of the FCOC RV Soul, contact James Peek, VP Business Development at vp.busdev@fcocrv.org or call (732) 552-6862.