



A publication of the
Freightliner Chassis Owners Club

SUMMER 2019

IT'S SUMMERTIME—
AND THE LIVIN' IS EASY.



SOL

UPCOMING RALLIES
MARK YOUR CALENDARS FOR
THE 2019 RALLY SEASON.

DETAILS ON PAGE 17.

RALLY RECAP
HIGHLIGHTS FROM OUR
YUMA RALLY.

DETAILS ON PAGE 20.

SHOP TALK
WEIGHT DISTRIBUTION.

DETAILS ON PAGE 26.





WHEN YOU NEED PARTS, SERVICE OR REPAIRS...

...the well stocked parts departments and technicians at Premier Truck Group are ready to help you keep your RV up and running. And, in the event you should require paint and body repair, our shops are well equipped to get your damaged or road worn vehicle looking like new again.

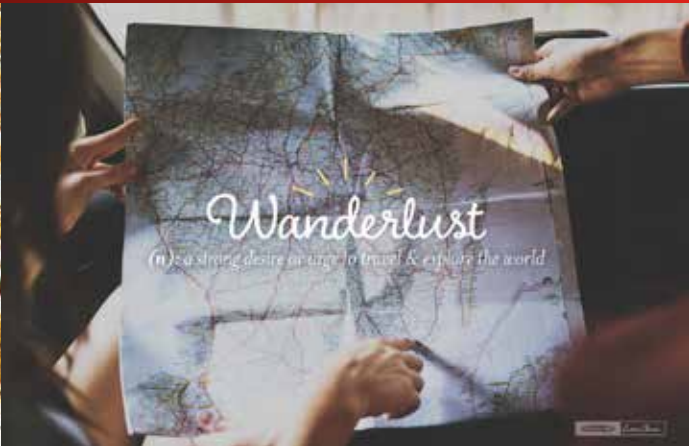
PREMIER TRUCK GROUP - YOU CAN COUNT ON US.

For more about capabilities, hours of operation and locations visit:

premiertruck.com



■ AMARILLO ■ ARDMORE ■ CHATTANOOGA ■ DALLAS ■ FORT WORTH ■ KNOXVILLE ■ ODESSA ■ OKLAHOMA CITY ■ TULSA



FIND FCCC ON SOCIAL MEDIA

Keep up with Freightliner Custom Chassis Corp. via our corporate Facebook page (Facebook.com/freightlinercustomchassis), lifestyle Facebook page (Facebook.com/RoadTrippers) and Twitter (@DriveFCCC).



TABLE OF CONTENTS

| | |
|----|---|
| 04 | COMMUNITY UPDATES Club updates, FCOC officer reports and FCCC news |
| 10 | INSIDE FCCC News and updates from our headquarters in Gaffney, SC |
| 17 | UPCOMING RALLIES Rally information and registration |
| 20 | RALLY RECAP Yuma, AZ |
| 22 | FEATURED ARTICLE Introducing DriveTech |
| 24 | PARTNER SHOWCASE REV's New Freedom Bridge |
| 25 | SEASONAL ARTICLE Living Simply, Living Well |
| 31 | FEATURED MEMBERS Roy & Kathy Hopper |
| 32 | ROADSIDE RECIPES Easy and delicious RV-approved dishes |

CONTENTS
RV
SOUL

SUMMER 2019

UPCOMING RALLIES*

| | |
|---------|--------------|
| 2019 | |
| 7/15-19 | AMANA, IA |
| 9/23-27 | COOS BAY, OR |

* Subject to change
FCOC is not to be held responsible for personal statements, opinions or representations advanced in papers, chapter newsletters, web site, in discussions at any meetings or its Internet site and Discussion Forums, or the validity of statements contained in any advertisements or printed materials.

MEET YOUR FCOC OFFICERS



PRESIDENT



Steve Batorson F373083
4505 N. Sanders Road
Tucson, AZ 85743
520-444-6772
president@fcocrv.org

SR. VICE PRESIDENT



Barbara Knutson F320163
3572 NW 21st Ave
Okeechobee, FL 34974
561-703-5284
svp@fcocrv.org

TREASURER



Tom Bernardi F382571
15305 Lake Maurine Drive
Odessa, FL 33556
813-920-3852
treasurer@fcocrv.org

VP MEMBERSHIP



Mary Costigan F323758
900 Bradford Court
San Jacinto, CA 92583
951-452-2999
vp.membership@fcocrv.org

SECRETARY



Pattee Perez F701016
28284 Las Casas
Mission Viejo, CA 92692
949-697-8893
secretary@fcocrv.org

EDITOR



Cindy Feindel F338560
31 Nixon Road
Framingham, MA 01701
508-509-8123
editor@fcocrv.org

VP BUSINESS DEVELOPMENT



James Peek F403774
570 Stratford Parkway
Winder, GA 30680
732-552-6862
vp.busdev@fcocrv.org

VP AREA OPERATIONS-EAST



Roy Hopper F286929
5965 41st Street
Vero Beach, FL 32967
772-559-3522
vp.area.ops.e@fcocrv.org

VP AREA OPERATIONS-WEST



Katherine Henley F173175
1901 W. Hwy 287 Business
Waxahachie, TX 75165
214-704-2437
vp.area.ops.w@fcocrv.org

ASSISTANT AREA OPERATIONS



James Robertson F313336
2200 Cabaniss Lane
Weatherford, TX 76088
817-692-1330
asst.area.ops@fcocrv.org

WEBMASTER



Tom Digate F469360
514 Americas Way
PMB 7850
Box Elder, SD 57719
260-413-3670
webmaster@fcocrv.org

AN ICON OF AMERICAN LUXURY



INTRODUCING THE NEW 2020 AMERICAN REVOLUTION



TOP FEATURES

- Freedom Floor HWH Flush Slide System and Leveling Jacks
- Exclusive 450HP Liberty/Freightliner Chassis® w/60 Degree Wheel Cut & Independent Front Suspension (IFS)
- UltraSteer® B-Series w/Passive Steer on Tag Axle
- Push Button Start
- Auto Headlights
- LCD Dash Display w/ 10" Monitors
- Power Cockpit Shades & Blinds
- Firefly™ Integrations Electronic Control System w/Multiplex Wiring
- Aqua-Hot® 400D Heating System
- Zone Electric Tile Heated Flooring (2)
- Full Tile Shower
- Roof Mounted Awning (Second Awning Optional)
- Emergency Exit Door (Optional)
- Undercarriage LED Lighting
- Power Generator Slide
- Technology Package
(JBL® Audio Package, Wifi Ranger, Cell Booster, 265W Solar Panel and Mobile Eye)
- Available Floorplans 42Q | 42V



Freedom Floor HWH Flush Slide System



Apex Residential Style Furniture



americancoach.com



FCOC PRESIDENT'S MESSAGE



Hello, friends,

I would like to take a few minutes to introduce myself to those who do not know me or that I have been nominated to serve as your FCOC president.

My wife and I have always been avid road trippers – enjoying the countryside is one of our favorite pastimes. It was in 2000 that we finally purchased our first RV. We upgraded to a Class A motorhome shortly after I retired, which was a little over 13 years ago from Panasonic Broadcast and Television System Company where I served as national planning manager.

It was on our trip to the Hershey RV Show that we signed us up to join the FCOC. Prior to joining, we were very active in a local FMCA chapter where I served as the club president and national director to FMCA. Since becoming members of the Freightliner Chassis Owners Club, we have attended as many of the rallies as possible. Throughout that time, I've served on the FCOC board in different positions.

I think we have a great Club and I know it will only continue to grow. But remember, it is not just the FCOC board's job to bring in new members; it is the job of EVERY member. You should be talking to anyone that you meet with a Freightliner chassis about joining the Club. Our service discount at Freightliner Oasis dealership locations is one of many selling points.

Thank you in advance for your support.

I look forward to seeing everyone at the upcoming rallies. Until then, happy camping!

James Peek

James Peek
FCOC President Elect

THE ROAD IS WAITING. GO EXPLORE.



THE MICHELIN® X® LINE™ ENERGY Z TIRE.

There's a lot of world out there to explore, and with the MICHELIN® X® LINE™ ENERGY Z 315/80R22.5 tires, you have nothing stopping you. Your motor coach deserves the most fuel-efficient, all-position MICHELIN® tire in the motor home industry. Groove wall miniature sipes and a large net contact area help to improve your ride, longevity and handling, which are designed to give you more mileage for your money. With these tires on your RV, the only thing on your mind should be where to go next.

Explore the full lineup at MichelinRVTires.com.

Copyright © 2019 Michelin North America, Inc. All rights reserved.
The Michelin Man is a registered trademark owned by Michelin North America, Inc.



MICHELIN

CLUB UPDATES



The Nominating Committee submits the following slate of Officers to be elected at the July Business Meeting, which will be held at the Amana, Iowa Rally.

President –James Peek
Webmaster–Tom Digate
VP Membership–Mary Costigan
Operations West–Katherine Henley
Secretary–Pattee Perez
VP Business Development

If anyone is interested in the position of VP Business Development for the RV Soul magazine, please contact Katherine Henley at (214) 704-2437.

All nominees have been contacted regarding their responsibilities and indicated a willingness to serve the Club.

As a reminder, anyone that wishes to nominate a candidate may do so at the July Business Meeting in Amana. A motion from the floor that is seconded, followed by acceptance by the person being nominated on the ballot would be required. Once nominations are closed, the election will begin.

On behalf of the Nominating Committee (*Katherine Henley, Julia Robertson, John MacCallum, Beth Digate and Cheryl Peek*), **respectfully submitted,**

Barbara Knutson



Get The Most From Your Allison-Equipped Motorhome

Allison Motorhome Series™ fully automatic transmissions provide customized performance at your fingertips. The transmission will automatically select gears based on engine rpm, throttle position, vehicle load and road speed. However, you can manually control the upshifts and downshifts when it is necessary for driving in different conditions. To avoid damage to the drivetrain, the transmission will not allow you to select a range that will over-speed the engine.



Highway Driving (Level Terrain)

Operating in the Drive mode is recommended when driving in normal highway conditions.



Mountainous Driving (Up & Down Terrain)

When ascending a grade, gently release pressure on the throttle and select a lower gear range to maintain higher engine rpm. Road speed may decrease, but power (torque) will remain at peak output. When descending a grade, never use a higher gear range than was used ascending the same grade. Selecting a lower gear range will also minimize cycling between ranges on a series of short up and down hills.



City Driving (Stop & Go Traffic)¹

To maximize performance select the lowest gear range that allows the vehicle to reach the speed you expect to attain between stops. This will minimize cycling between higher ranges and provide better vehicle cooling while driving in stop-and-go conditions.



Winter Driving (Ice Or Snow)²

If possible, reduce road speed and select a lower gear range before you lose traction. Select the gear range that will not exceed the speed you expect to maintain. Accelerate or decelerate gradually to prevent losing traction. It is very important to gradually slow down when a lower gear range is selected. It is also important to allow the transmission to reach the lower gear range before attempting to accelerate. This will avoid an unexpected downshift during acceleration.



Engine Braking³

Engine braking provides good speed control for going down grades. When the vehicle is heavily loaded or the grade is steep, it may be desirable to preselect a lower range reaching the grade. If engine-governed speed is exceeded, the transmission will upshift automatically to the next range.

For more information, visit allisontransmission.com.

¹In the event you leave the vehicle or driving compartment, even momentarily, while the engine is running, be sure the transmission is in Neutral and the parking brake and/or emergency brakes are set and properly engaged. Unexpected and possible sudden vehicle movement may occur if these precautions are not taken.

²Using the retarder on wet or slippery roads may cause loss of traction on the drive wheels—your vehicle may slide out of control. To help avoid injury or property damage, turn the retarder enable to OFF when driving on wet or slippery roads. The retarder is automatically disabled whenever the vehicle anti-lock brake system (ABS) is active. However, in case the ABS malfunctions, it is recommended that the retarder enable switch, if present, be disabled.

³To avoid loss of control, use a combination of downshifting, braking and other retarding devices. Downshifting to a lower transmission range increases engine braking and can help you maintain control. The transmission has a feature to prevent automatic upshifting above the lower range selected. However, during downhill operation, if engine-governed speed is exceeded in the lower range, the transmission will upshift to the next higher range to prevent engine damage. This will reduce engine braking and could cause a loss of control. Apply the vehicle brakes or other retarding device to prevent exceeding engine-governed speed in the lower range selected.



AS HAPPY AS WE ARE TO SEE YOU...

OUR GOAL IS TO GET YOU WHERE YOU REALLY WANT TO BE.

Premier Network with 10 full-service dealerships in Illinois, Indiana & Missouri

Extensive Parts & Service inventory and hours of operation - 24/7 in Troy

Hook-Ups, Ample Parking & Easy Access available at most locations.

www.truckcentersinc.com
Family Owned & Operated Since 1970



CAMPFIRE NEWS

VOLUME 1

In Today's News

Sunny 75°

Last month, two MASA members were traveling in their RV when suddenly one of them needed medical attention. 911 was called, & they were taken by ground ambulance to a local hospital. Soon, it was known he needed airlift to Big Town General for emergency surgery. After a 3 week stay they were transported back home to recuperate at their local hospital. Since that time, their RV was shipped back to their driveway.

MASA Paid For Them:
 Ground Ambulance
 Air Ambulance
 Trip Home
 RV Shipping

BUT...
We cover even more!!!



Learn more about the many Member Benefits today & Special Discounted Pricing.

**Please call:
770.625.8456**



MESSAGE FROM



Greetings, FCOC Members:

I hope this letter finds you well – and I hope your summer is off to a fantastic start, especially if you're spending it behind the wheel of your RV.

As always, I'm excited to share this issue of *RV Soul* with you. It's full of the information, insights and updates we feel are most valuable to FCOC members – that help you get the most value from your membership and ownership experience.

And, as always, I'm excited about the work our team at FCCC is doing on behalf of our partners and, most importantly, our end users like you. Our goal at FCCC is to embrace our customers and deliver memories, one ride at a time. Our continuing story is about our determination to build products that forge a powerful bond between FCCC and our customers. The spirit to lead spurred FCCC to the top of the industry, and our passion for innovation propels us into the future.

You didn't buy an RV to commute to work or run to the grocery store, after all. You purchased an RV to experience the road, the adventure, the fellowship. You purchased an RV to experience *life*. At FCCC, we believe there's no better way to experience life than behind the wheel of an RV riding on one of our products. We take our responsibility to provide you with the best ownership experience possible seriously – and we're always looking for ways to make it even better.

Consider our latest technological advance – DriveTech. It's the industry's first driving control system to prioritize safety in a connected world – and it brings the ease and comfort of a luxury-automotive driving experience behind the wheel of an RV. Picture state-of-the-art, digital dashboard displays to keep you informed while keeping your

eyes on the road, and column-mounted controls to keep your hands on the wheel at all times. DriveTech offers a number of exciting features and benefits in addition to these, and will be standard on all FCCC-powered RVs beginning next year.

In the meantime, our team looks forward to visiting with many of you over the next few months at rallies and other events. It's where we hear the stories of your adventures and your experiences. If you haven't already, please plan to join us at the upcoming 2019 rallies:

- Amana, IA, July 15-19
- Coos Bay, OR, Sept. 23-27

You can always check our event listings at www.fcocrv.org.

In addition, if you've not had the chance to join us for Camp Freightliner, classes are open to anyone who wants to learn more about motorhomes built on Freightliner Custom Chassis. It's an informative, engaging and entertaining opportunity to interact with and learn from our experts to ensure you're getting the most out of your RV.

It's a sincere honor for all of us here in Gaffney to see how our work delivers memories for our friends, so please consider tagging us via our social media presence.

Until next time, safe travels – and enjoy the journey.

Jeff Sather
FCCC President & CEO



SACRAMENTO TRUCK CENTER MOTORHOME SERVICE



Regular preventive maintenance check ups are the key to keeping your Freightliner chassis in safe, reliable condition.

Having STC perform a chassis inspection is the best way to ensure you will get safe, enjoyable miles from your Freightliner chassis.

Our factory trained technicians will perform a thorough 15-point chassis inspection free of charge and will provide you with an estimate for any repairs needed. Additionally, FCOC members will receive a 10% discount on labor and a fleet discount on any parts needed.

AT SACRAMENTO TRUCK CENTER, YOU WILL FIND:

- A Clean, Organized Service Department
- Factory-Trained Technicians on FCCC, Cummins, Cat, Detroit Diesel, MBE Allison
- Friendly, Professional Service Personnel
- All of the Latest Tools and Equipment

**COME TO SACRAMENTO TRUCK CENTER
"WHERE SERVICE IS PERFORMED WITH INTEGRITY"**

For more information, visit our website: www.sacramentotruckcenter.com

Email Contact: LCowan@sacramentotruck.com



DRIVING VALUE

Wherever the road leads, getting more value for your money makes every journey more enjoyable. Alliance offers top-quality, all-makes parts and accessories for RVs—high-value products that are readily available and easily affordable.

CHOOSE ALLIANCE AND DRIVE MORE VALUE.

FIND YOUR NEAREST LOCATION AT
ALLIANCEPARTS.COM



DTNA/APSM-A-1152. Copyright © Daimler Trucks North America LLC. All rights reserved. Alliance Parts is a brand of Daimler Trucks North America LLC, a Daimler company.

DAIMLER | Alliance Parts – A Daimler Group Brand

INSIDE

NEWS AND UPDATES
FROM OUR HEADQUARTERS IN GAFFNEY, SC

FREIGHTLINER®

Custom Chassis



AIM RALLY

All-Inclusive Motorhome Club (AIM) President Tommy Townsend and FCOC President Steve Batorson paused for a quick smile during a fun-filled week at the 2019 AIM Gala in Savannah, GA.



NEW WEST TRUCK CENTRES

We were honored to help congratulate FCCC dealer New West Truck Centres in Calgary, Alberta, and Service Manager Dave Dunlop on their SIX years of Elite service.

HOLLAND RV

Holland RV took over the former Rams Stadium in San Diego with their hundreds of RVs, built on FCCC, available for purchase.



TIFFIN OWNERS CLUB RALLY

Hemet, CA, provided absolutely beautiful weather for an awesome time at the 2019 Spring Tiffin Rally!



CAJUN RALLY

Check out that crowd at the Cajun RV Rally in Rayne, LA. We enjoyed some info-packed presentations, city exploration and Cajun-style eats served by some familiar faces (members of FCCC's RV Division).



ALLAN DALE RVS & TRAILERS

Allan (owner of Allan Dale RVs & Trailers) was a very hospitable host, treating FCCC RV Division's Joe Snyder to a scenic helicopter ride during training sessions at the dealer's Red Deer and Edmonton, Canada, locations.



NIRVC CUSTOMER APPRECIATION

Thanks to all who came out to the 2019 National Indoor RV Centers Customer Appreciation Rally at the Winstar Casino and RV Park. We had a wonderful time!



YOUR SO CAL RV HEADQUARTERS

2015-2017 FCCC DEALER OF THE YEAR



- 2 Hour Express Assessments
- 15% Discount on 6/12/15 month full service
- Same Day Appointments
- Ask about Cummins Inline™ Mini Datalink Adapter



10150 CHERRY AVE. FONTANA CA 92335
WWW.TRANS-WEST.COM
909-770-5620

**Where Family & Customers
ALWAYS Come FIRST!**

At Freedom RV **We Invite** you to visit us today, for service, a new RV, or to trade in your current RV. We want to personally say **Welcome** to all of your residents. Come on down and say **Hello**.

2016 WINNER
2015 WINNER

Best RV Dealer in Tuscon

**Sales, Consign, Financing,
with extended warranties available!**

Go Where The Road Takes You

Freedom RV
go where the road takes you

1-800-782-2294
520-750-1100
freedomrvaz.com

Sales, Service, Parts: 3735 E Irvington Rd, Tucson
Sales: 7475 N Casa Grande Hwy, Marana
Service, Parts: 6260 N Travel Center, Tucson



Redefining Performance.



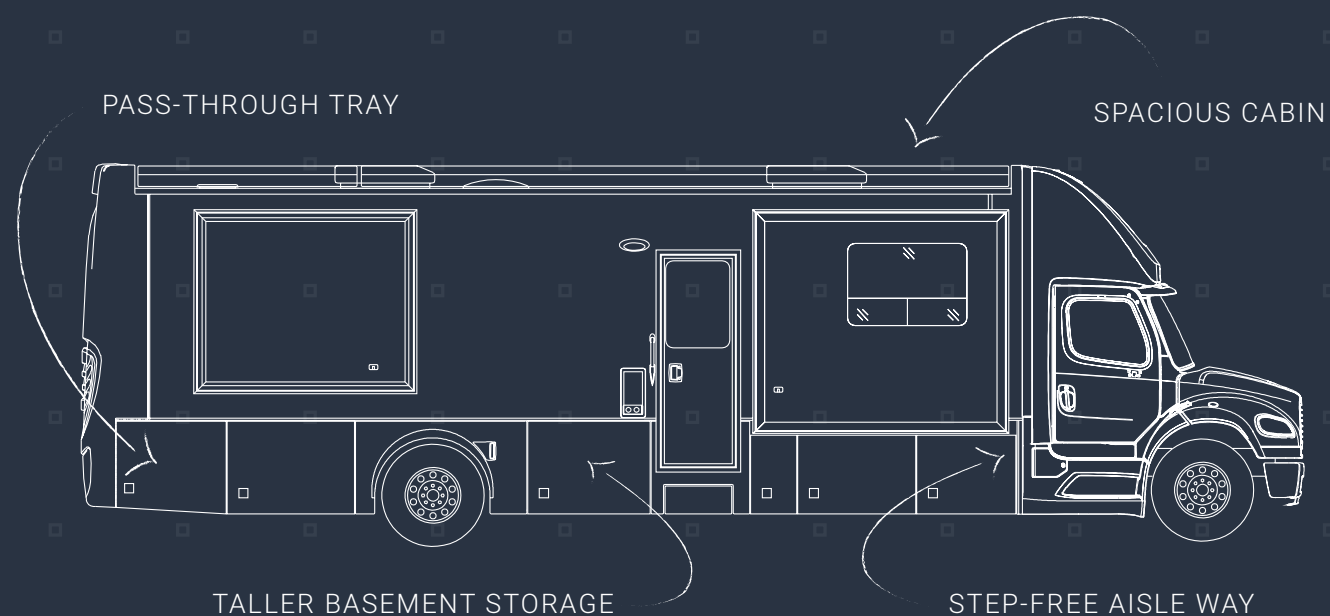
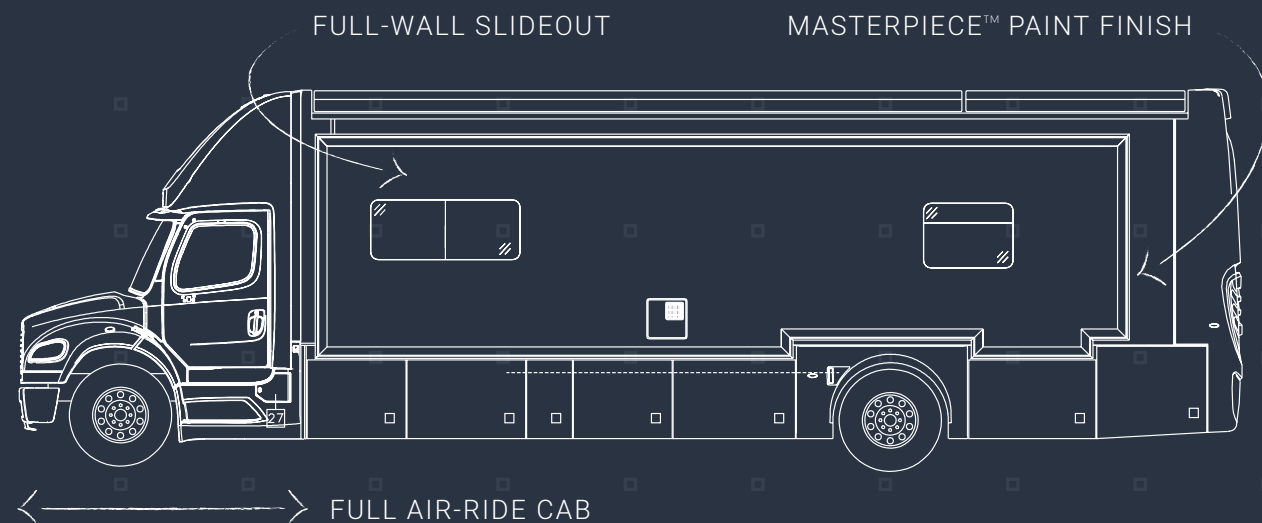
Better In Every™ Way.

What makes Cummins the leading choice for RV customers? An unsurpassed combination of performance, reliability and fuel economy. From the 200-hp B6.7™ to the 605-hp X15™ Performance Series, there's a Cummins diesel that's the right size for your next RV – all backed by the largest, most capable service and support network in North America, including numerous Coach Care™ RV Centers. For confidence over any terrain, longer trips between fueling and world-class support, you deserve a diesel. Call Cummins Care at 1-800-CUMMINS™ (1-800-286-6467) or visit cumminsengines.com/rv to see how our 2017 engines are redefining performance in every way.



©2017 Cummins Inc., Box 3005, Columbus, IN 47202-3005 U.S.A.





Driven By You

WHAT'S NEXT IS ALMOST HERE

The result of two years of research and development, the 2020 Super Star not only represents the first Super C coach we've ever built, but the first and only Super C to feature a full air-ride cab, full-wall slideout, step-free aisle way, and more. Because doing it better starts with reinventing how it's done.

Coming Summer 2019—find a dealer at NewmarSuperC.com

UPCOMING RALLIES



RALLY MASTERS NEEDED

We are in need of Rally Masters and Assistant Rally Masters for upcoming rallies. Rally locations have been decided, now we just need party planners to take the lead for the finishing touches. There will be plenty of experienced Rally Masters present that will help guide you along.

COOS BAY, OREGON

September 23-27, 2019

THE MILL CASINO HOTEL & RV PARK

3201 Tremont Street
North Bend, OR 97459
(800) 953-4800

* Rally dates subject to change

CANCELLATION POLICY*

1. An administration fee of \$25 will be charged for all registrations received.
2. Members who register and then:
 - a) Cancel a minimum of 31 days prior to the start of the rally will receive a full refund minus the administration fee.
 - b) Cancel 30 to 8 days prior to the start of a rally will be charged for any non-refundable commitments paid in advance for the rally.
 - c) Cancel 7 or less days prior to the rally's start will result in no portion of the rally fees being refunded.
3. Members that register and pay for a rally and do not attend will not receive any refund.

4. All refunds will be made at the conclusion of the rally.

** Many of the services we use in hosting a rally have to be paid (some as far as a year) in advance. Due to these non-refundable expenditures, we cannot continue to absorb the costs of late cancellations and must have these rules in place. Thank you for understanding.*

DIETARY REQUESTS

Please note that FCCC rallies can no longer accommodate special dietary requests due to the wide variety of caterers and high cost for special menus. We apologize for any inconvenience.

COOS BAY, OREGON

September 23-27, 2019

\$350/Coach, \$241/Single

Each Extra Person: add \$100

THE MILL CASINO HOTEL & RV PARK

3201 Tremont Street

North Bend, OR 97459

(800) 953-4800

www.themillcasino.com



THREE RIVERS CASINO RESORT



COOS ART MUSEUM



OREGON DUNES NATIONAL RECREATION AREA



SUNSET BAY GOLF

2019 FCOC FALL RALLY

The Coos Bay Rally will host a dog parade, so get your puppies and pooches spiffed up and ready to strut! Also, please be sure to bring one wrapped gift (a value of \$10) to registration.

RALLY FEE INCLUDES, BUT IS NOT LIMITED TO THE FOLLOWING:

- 4 Nights Full Hook-Ups with 50-Amp Power
- 4 Dinners
- 3 Full Breakfasts
- 1 Continental Breakfast
- Hospitality Hours Each Day
- First Timers Orientation Seminar
- Professional Entertainment (one night)
- Games
- Camp Freightliner Classes Available at Additional Cost (held September 27-28 and September 30-October 1)

THINGS TO DO AND SEE IN COOS BAY

THREE RIVERS CASINO RESORT: This award-winning casino has two locations on the Oregon Coast – Coos Bay and Florence. Both offer comfortable accommodations, excellent food and great gaming. (www.threeriverscasino.com)

COOS ART MUSEUM: Located in downtown Coos Bay, the museum's permanent collection includes a gallery dedicated to the short, but fascinating life of champion distance runner Steve Prefontaine, as well as contemporary American prints and Northwest art. (www.coosart.org)

COOS HISTORIAL AND MARITIME MUSEUM: South coastal Oregon's rich history comes alive with a collection of over 50,000 objects and more than a quarter million images dating from pre-history through the 1970s. (www.cooshistory.org)

SIUSLAW NATIONAL FOREST: Stretching from "the forest floor to the ocean shore," this national forest encompasses 630,000 acres between Coos Bay and Tillamook. Activities range from swimming and fishing to hiking and mountain biking. Catch a glimpse of a whale or marvel at the power of a waterfall. (www.fs.usda.gov/siuslaw)

OREGON DUNES NATIONAL RECREATION AREA: Stretching 40 miles along the Oregon coast, the dunes provide numerous recreational opportunities, including biking, hiking, fishing, canoeing, horseback riding and camping. (www.stateparks.com/oregon_dunes_national_recreation_area_in_oregon.html)

CAPE ARAGO STATE PARK: It's said that in 1579, Sir Francis Drake sought shelter for his ship around Cape Arago. With breathtaking vistas and plenty of wildlife, the cape highlights the beauty and charm of Oregon's southern coast.

SUNSET BAY GOLF: Professionally designed by John Zoller – who developed Spyglass and Poppy Hills – this par 36 course is as beautiful as it is challenging. Cart and club rentals are available. (www.sunsetbaygolf.com)

WATSON RANCH: This 18-hole course sits along the coast and is perfect for all levels of skill. The pro shop has equipment, clothing and services, and is managed by the resident pro golfer. (www.watsonranchgolf.com)

2019 FCOC FALL RALLY

SEPTEMBER 23-27, 2019

MILL CREEK CASINO RV PARK | 3201 TREMONT AVE | NORTH BEND, OR 97459 | (800) 953-4800

Rally Masters: Barbara Knutson | (561) 703-5284 | maxmandy0836@yahoo.com

Katherine Henley | (214) 704-2437 | vp.area.ops.W@fcocrv.org

Asst. Rally Masters: Cheryl & James Peek | (732) 552-6862 | jlpeek1948@yahoo.com

Member #: _____

Pilot: _____
Last First

Nickname for Badge: _____

Co-Pilot: _____
Last First

Nickname for Badge: _____

Will you have a guest(s) attending the rally? ☐ Yes ☐ No

If so, please give name(s) and age(s): _____

Address: _____
City State Zip Code

Primary phone #: _____ Cell phone #: _____

Email address: _____ Share your e-mail with other attendees? ☐ Yes ☐ No

Mfg/Model of Coach: _____ Length: _____

Any special events during the rally, e.g. birthdays or anniversary?: _____

First time at an FCOC rally? ☐ Yes ☐ No Volunteer to help with the rally? ☐ Yes ☐ No Handicap Parking? ☐ Yes ☐ No

| | |
|---|-----------------------|
| FCOC – Freightliner Chassis Owners Club Member – Two people per coach | \$350.00 = \$ _____ |
| FCOC – Freightliner Chassis Owners Club Member – One person per coach | \$241.00 = \$ _____ |
| Each extra person in the coach over age 14 (Number of people _____) | x \$100.00 = \$ _____ |
| Non-FCOC member additional per coach | \$50.00 = \$ _____ |
| TOTAL = | \$ _____ |

Make check payable to: FCOC. **Mail to:** FCOC, PO Box 1527, Cortaro, AZ 85652 no later than August 15, 2019. (\$25 cancellation fee. No refunds after September 14.) In the Note section, please write "Coos Bay, OR 2019." You should contact the campground directly for additional nights pre/post rally.

Ladies Social? ☐ Yes ☐ No Crafts? ☐ Yes ☐ No Attending Camp Freightliner? ☐ Yes ☐ No

CAMP FREIGHTLINER classes are available to rally attendees for an additional cost. Class dates: September 27-28 and September 30-October 1, 2019. Two people attending is \$285; one person attending is \$235 – includes 2 lunches, 1 dinner. You must register directly with Camp Freightliner at www.fccrv.com/owners/camp-freightliner after receiving your rally registration confirmation, as it will include the confirmation number necessary to register for the class. Spots not filled by rally attendees will be opened to the public.

Date Received: _____ Confirmation Sent: _____

register online
www.FCOCRv.org

FORTUNA DE ORO RV RESORT RALLY – YUMA, AZ

Mary Costigan, Rally Master

RALLY RECAP



This was the second time we have held our rally at this resort, located on the east end of Yuma, by the foothills. No rain, but it was a bit windy. In all, 76 coaches were present and each received a complimentary motorhome/car wash.

Prior to our rally, Camp Freightliner held two successful classes taught by Mike Cody. Everyone who attended those classes had nothing but praise for what they learned.

President Steve Batorson opened the rally with a seminar for first-time attendees. On our first evening before dinner, we also asked the veterans to stand up and thanked them for their service. We assembled a Remembrance Table—filled with significant memorabilia—for all of our veterans who gave their ultimate sacrifice.

Wayne Scruggs did an excellent job on the Fireside Chat – Knowing Your Chassis. Wayne originally had two hours to do his seminar, but he put in an additional two hours on

the last day of the rally. He also brought chassis parts for those who needed replacements and was available, along with Steve, to help with minor repairs.

We had many vendors who not only held seminars but also supplied door prizes. Kudos to these companies in attendance: All Pro Water Flow, Sky Med, Adventure Caravan, Pampered Chef, an RV'ers Friend, Windshields Chip & Repair, Michelin Tire, Cummins Engine, Major Wingfield Enterprises and Janet Trannum with an explanation of the use of CBD oil.



Remembrance Table—filled with significant memorabilia in honor of all our veterans who made the ultimate sacrifice.

Thanks to RV World for bringing display motorhomes and sponsoring a hamburger/hot dog luncheon.

The resort caterer did an outstanding job with the meals during the week. The resort sponsored our first night social hour, and also kept the iced tea, lemonade and coffee available throughout the rally. No one went hungry, and there were seconds for those who wanted them.

Thursday evening, we were entertained by Art Gagnon with songs ranging from the 1950s through the '70s, including songs that attracted those who like to do line dancing.

Thank you to our Assistant Rally Masters Ed and Judi Hessemer. This was their first time being Assistant Rally Masters for our club, and I appreciate all of their help during the rally.

I want to thank all of our volunteers including registration, food servers, logo merchandise sales and after meal clean-up. I especially want to thank Wally Wallington who helped clean up after every meal. Wally doesn't let his disability stop him from doing this at every rally he attends.

Finally, I want to thank my husband, Joe, with the help of Ed Hessimer, for all the work before, during and after the rally. Joe is always in the background but has always been there when I needed his help.

NIGHTHAWK

The world's first illuminated tow bar

Patent pending • US patent numbers 6,619,686, 6,957,824, 7,029,021 and 7,461,855

Questions about Dinghy Towing?
Call the experts
1-800-669-9690

42 years of experience is at your fingertips.

We're Roadmaster. We pretty much invented towing. So if you've got a question about tow bars, why not call the experts?

LED strips illuminate with RV taillights and provide eye-catching good looks while also lighting up the dead spot between your RV and towed vehicle. Our non-binding tow bars are the easiest to disconnect in the industry. They release at any angle or bind. The first time - every time. Includes internally routed safety cables and power cord.

**Time Tested
Time Proven**

**roadmasterinc.com
800-669-9690**

FEATURED ARTICLE

OUT WITH THE OLD, IN WITH THE AWESOME.

For years, the luxury passenger car industry has been implementing brilliant ideas to improve driver safety and comfort. Features like adaptive cruise control, collision mitigation, tire pressure monitoring and Bluetooth phone controls on the steering wheel not only feel luxurious—they help to keep drivers and passengers safe.

As we've watched these innovations come to pass, we've thought to ourselves...why have they not made their way into the RV driving experience? Why did luxury motorhomes stop innovating 10 years ago?

That's why our team at FCCC is thrilled to officially launch DriveTech. This comfortable, easy-to-use driver console rolls together the OptiView all-digital LCD dash display, RoadWatch state-of-the-art safety systems, and FCCC's all-new ergonomic steering wheel and column-mounted controls. This puts all controls for OptiView, Bluetooth, the transmission and more within easy reach.

DriveTech is now standard on every 2020 model motorhome. Keep in mind that each manufacturer will select from our menu of DriveTech features for their motorhome models, so be sure to ask your dealer for the features you want in your next RV. We're pleased to do our part to improve your safety as an RV driver, and to propel the RV industry into the future. And we look forward to what's next.



THE FUTURE IS NOW

DriveTech turns piloting an RV into an automotive experience.
An ergonomic steering wheel and easy-to-reach column-mounted controls give you fingertip control. The fully integrated, all-digital OptiView LCD display keeps you informed without distraction. The state-of-the-art RoadWatch safety system delivers effortless control. The all-new DriveTech driving system puts you in total command with the highest levels of safety, performance and luxury. Best of all, DriveTech now comes standard on every FCCC-based 2020 model motorhome.

Discover DriveTech for yourself – visit the interactive experience at FCCCRV.com/DrivTech. Find the perfect motorhome featuring DriveTech – visit MyRVAdvisor.com.

5-STAR EXPERIENCE

OPTIVIEW | ROADWATCH | DRIVE TECH

DAIMLER | Freightliner Custom Chassis - A Daimler Group Brand

Specifications are subject to change without notice. Freightliner Custom Chassis Corporation is registered to ISO 9001:2015 and ISO 14001:2015. ©2019 Daimler Trucks North America LLC. All rights reserved. Freightliner Custom Chassis Corporation is a subsidiary of Daimler Trucks North America LLC, a Daimler company.

>> LEARN MORE AT FCCCRV.COM/DRIVETECH

MIGHTY HAULER™



TRIKE
VERSION
AVAILABLE

GOLF CART CARRIER

This solid steel carrier can safely hold up to 1,200 lbs, making it perfect to bring any gas or electric golf cart with your diesel camper. Only for fifth wheel trailers.

SPECIAL FEATURES INCLUDE:

- Separate entry and exit points - drive on, drive off
- Able to flat tow a car
- Tail lights and multiple tie-down points

1-330-414-5788 • www.mightyhauler.com

PATENT PENDING • MADE IN THE USA



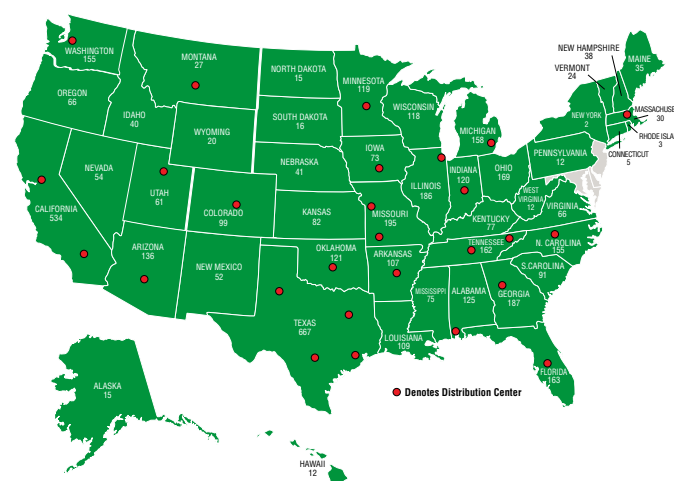
CUMMINS HAS RELEASED A NEW APP.

CUMMINS HAS INTRODUCED APPLE AND ANDROID VERSIONS OF ITS FREE QUICK SERVE ONLINE (QSOL) MOBILE APP. WITH YOUR ENGINE SERIAL NUMBER READY, SEARCH FOR "CUMMINSQUICKSERVEMOBILE" IN THE GOOGLE PLAY STORE OR "QUICKSERVE MOBILE" IN THE APPLE STORE.

Once you've entered your serial number, the app provides access to Cummins parts options, parts catalogs and engine dataplate information for 15 million Cummins serial numbers (ESNs). It also includes a fault-code analyzer for Cummins electronic engines, which explains current fault codes, advises which fault codes are dependent on others and recommends which should be fixed first.



4,829 Locations and Growing!



visit www.oreillyauto.com for state-by-state listings of O'Reilly locations

December 31, 2016
As reported on February 8, 2017

USE ACCOUNT #1284975

LIFE WAS MEANT FOR
good friends AND
GREAT ADVENTURE



PARTNER SHOWCASE



REV'S NEW FREEDOM BRIDGE

The REV story is one of tradition, history and pride. As the parent company to 29 specialty brands, REV is unafraid to push the envelope on improvement and innovation. From fire engines and ambulances to luxury RVs, REV makes “vehicle for life.”

Together, REV's brands have manufactured more than 250,000 vehicles in service today. If measured bumper-to-bumper, that line of vehicles would stretch from New York City to Dallas.

Freightliner's partnership with REV motorhome brands has seen FCCC features and products implemented on REV foundations to keep owners protected and connected. Indeed, we share a consistent commitment to ultimate customer satisfaction.

That tradition continues with Freedom Bridge.

As the industry's only fully-integrated foundation, Freedom Bridge combines the unrivaled strength of Fleetwood's driver-centric design insight with the high-performance innovation of a Freightliner chassis.

Freedom Bridge features:

- I-beam construction for exceptional strength and a 30% higher torsion rating than the competition

- Re-engineered slide rail placement allowing for additional pass-through storage for increased capacity and easier access
- Double-thick, sound dampening floors to minimize exterior sound
- The 100-gallon fuel tank can be accessed from either side of the RV

It also comes with OptiView and DriveTech – a superior piloting system that turns driving an RV into a driver-friendly automotive experience. And it's all backed by the nation's best service support network.

The Freedom Bridge XCM foundation can be found on Fleetwood's Discovery LXE, Discovery and Pace Arrow LXE models.

Freedom Bridge is a testament to FCCC's long-standing, forward-thinking alliance with REV's RV brands.

For more information about REV, go to revgroup.com/rev-group-best-luxury-rv-manufacturers.

SEASONAL ARTICLE



LIVING SIMPLY, LIVING WELL

The RV lifestyle should be one of simplicity, relaxation and adventure. If you're struggling to achieve any of these, the following how-to guide is the perfect place to start.

Quality Over Quantity.

This first tip could go for nearly anything in your life – the destinations you hit this year, the upgrades you make to your coach, the things you pack and/or purchase on your travels. The bottom line: make this year about “how great and memorable,” not “how much or how many.” Venture to the spots that have been on your bucket list for years, but

still haven't been checked off. Or, spend some extra time at the places that mean the most to you and your travel partner(s). As far as your coach goes, make one renovation or improvement your priority this season. Instead of trying to tackle the whole rig, replace the master bedding or put in new floors – something that has large impact and will give you a breath of fresh air for the season ahead.

Possession Obsession.

Life on the road is about the experience and magic of each moment. Our recommendation is to first make a list of everything you're planning to pack. Got it? Okay, now assign grades of importance and value to each of those things. Our bet is that you'll find the majority of your list can be left behind without any adverse effect on your trip and overall experience. Working to gradually reduce your number of nonessentials will help rid you of the things that drain your bank account, your energy or your time; while helping to center your focus on the things that add joy, satisfaction and fulfillment instead.

Disconnect to Reconnect.

This goes for lots of areas as well. Instead of passing the hours by playing a game on your smart phone or tablet, use that time to discuss what you're looking forward to, the places you want to see and the food you want to try. We recommend leaving one piece of technology behind. If you typically take a cell phone, tablet and laptop, leave the tablet behind for this trip. Another great way to disconnect is to kick it old school – use a map or printed instructions to get to your destination instead of the GPS on your device.

Beauty Is In The Details.

We know how important electronic devices are in documenting moments and photographing memories – but there are many other ways those can be captured even more vividly. Journals, albums and shadow boxes are great hobbies to explore that help solidify memories for decades to come. Write about what you ate; the joke your partner made; the things you saw; how you felt. Attach photos, receipts, postcards, clothing tags, a restaurant napkin, etc. – you'll find the smallest detail can incite the largest and most meaningful memories.

SHOP TALK

PROPER WEIGHT DISTRIBUTION

As important as tire inflation is to driving, weight distribution in your motorhome is imperative to your safety. Too much weight either on one side of the vehicle or too much weight in the rear compared to the front axle can adversely affect the handling characteristics. In some cases, an imbalance can result in overloading the tires or axle components.

Some common effects of improper weight distribution include front-end wandering, coach porpoising and even driver fatigue.

Some tips to keep you steady:

- Keep front to rear weight close to equal percentages of each axle weight rating (**Example: Front GAWR = 10,410 lbs. / 80% = 8,328. Rear GAWR = 17,500 lbs. / 80% = 14,000 lbs.**)
 - This ratio provides the best handling characteristics of the vehicle

- Light on the front axle and heavy on the rear axle = wandering and porpoising or continued bouncing of the front of the coach after hitting a bump in the road
- Small percentage differences may be okay
- Know what your vehicle weighs to determine the best location for your belongings. Simply because you can fit everything in one compartment for easy access does not make this your best option
- Maintain as much of an equal balance as possible when loading your equipment, food and other supplies into the vehicle

★ GET A FREE RV INSURANCE QUOTE ONLINE! ★



OVERLAND

INSURANCE SERVICES

1-800-677-4027

Overland Insurance has been a premier supplier of affordable Recreational Vehicle Insurance for over 40 years. Look no further when you want the best RV insurance coverage at the lowest possible cost.

Let Overland Insurance Services prepare a customized motor home or travel trailer insurance proposal and you'll be amazed how much coverage your premium dollar will buy.

SERVICE UPDATE



AS YOU SEEK RV SERVICE OVER THE SUMMER, BE SURE TO VISIT FREIGHTLINER NETWORK SERVICE LOCATIONS. THESE ARE THE SERVICES WE OFFER THAT NO ONE ELSE CAN:

NATIONWIDE PARTS ACCESS THROUGH PDCS: We hate downtime as much as you do. Our nationwide network of Parts Distribution Centers supplies components to our 450+ Freightliner locations.

OASIS NETWORK: More than 90 Freightliner service locations are certified Oasis centers, featuring dedicated motorhome facilities, specially trained technicians, secure parking and other amenities exclusively for motorhome owners.

POWER IN YOUR POCKET: The 24/7 Direct app* empowers you to locate a dealer and contact FCCC factory technicians with one click – anytime, anywhere. Download the app and find a dealer near you today!

SERVICE AT RALLIES: The FCCC factory service team is regularly onsite at RV rallies and shows, performing basic chassis service. Appointments are typically half an hour long, and you'll be charged for parts only, as needed. It's our way of saying thanks for being an FCCC owner.

**Available for Apple or Android device by searching "Freightliner 24/7."*

AVAILABLE NOW

The 24/7 free mobile app with a full suite of owner resources is available for Apple and Android devices. Search: Freightliner 247. If you've already downloaded the app, go to your app store to update.





Get to Know Your Chassis.

NEW! PAY FOR CAMP FREIGHTLINER WHEN YOU REGISTER ONLINE!

When you register for Camp Freightliner on FCCCRV.com, you can now pay right away by debit or credit card, or your PayPal account.

2019 CLASS SCHEDULE UPDATED ON FCCCRV.COM

To register, visit FCCCRV.com and click on "Camp Freightliner" on the home page.

2019 CLASSES AT FCOC RALLIES

We've made special arrangements with FCCC to have a full Camp Freightliner at a number of our 2019 FCOC rallies. They're just like the classes you'd take in Gaffney, but you don't have to go to South Carolina!

When you register for the rally at FCOCRV.org, you'll receive a special code to enter when you sign up for Camp Freightliner at FCCCRV.com/owners/camp-freightliner.



TOUR THE FCCC FACTORY

While you're in town for Camp Freightliner, we encourage you to tour the factory to see how our chassis come together.

At approximately 200,000 sq. ft., the FCCC Factory is a must-see for Freightliner Chassis owners. Just 4.5 miles from our Service Center and six miles from the KOA Campground, the FCCC Factory offers a daily tour Monday-Friday with registration beginning at 10:15 a.m. in the main lobby. Each tour lasts 45 minutes to an hour, and you will see everything from an engine being up-fitted with accessories to a completed chassis ready to roll out the door to the body builder.

Time for a factory tour is not included in the Camp Freightliner itinerary, so plan an extra day before or after class for this one-of-a-kind experience. You won't want to miss it!

552 Hyatt St.
Gaffney, SC 29341
(864) 487-1700
fccservice@daimler.com



CAMP FREIGHTLINER

We had some wonderful groups join us for Camp Freightliner who were very eager and excited to learn about all the technology we've developed recently, including OptiView dash, RoadWatch and our all-new push-to-start key FOB, just to name a few. There are many Camp Freightliner opportunities in the near future and we hope to see you there!



CAMP FREIGHTLINER I

Take advantage of FCCC's comprehensive and captivating two-day training session in Gaffney, SC, to learn about the benefits of driving a motorhome built on an FCCC chassis. This is not a hands-on workshop, but you will spend time at a bare chassis to become more familiar with the features. Class size is limited and filled on a first-registration basis, so sign up today!

Topics:

- Air brake system
- Electrical system
- Maintenance intervals
- Weight distribution
- Vehicle storage
- Plus much more!

Fee: \$245.00 for single attendance or \$295.00 for driver and co-pilot for the two-day class.

Please feel free to bring your laptops to class, so you can follow along with the Internet portion of the course.



CAMP FREIGHTLINER II

Camp Freightliner II is a Service & Maintenance class held at the Factory Service Center. This is not a hands-on course, but pairs you with a service technician in the service bay to observe the proper service techniques and ask questions about the chassis.

Fee: \$159.00+ cost of your scheduled maintenance (Covers safety and protective equipment, lunch and other supplies).

Camp Freightliner I is a prerequisite to this class.

There is a minimum level of routine service required for this class, which will be verified upon scheduling of service.



2019 CAMP FREIGHTLINER IS SOLD OUT. THANKS FOR YOUR INTEREST—WE'LL ADD 2020 CLASSES IN THE FALL. KEEP AN EYE ON THE WEBSITE FOR THE NEW SCHEDULE!



TURNPIKE
BRAINTEASERS

SUDOKU

| | | | | | | | | |
|---|---|---|---|---|---|---|---|---|
| | | | 7 | | | | | |
| 5 | | | | 8 | | | 4 | |
| | | 2 | 4 | | 6 | | 7 | |
| | | | | 3 | | | 9 | 8 |
| | | | | | 4 | 2 | 3 | |
| | 8 | | | | 2 | | | 5 |
| | | | | | | | | |
| | 2 | | | 5 | | | | 1 |
| | 7 | 5 | | | 1 | | | |

WORD SEARCH

- ADVENTURE
AMANA
ANIMALS
BASEBALL
BEACH
BIKING
BOATING
BREWERIES
BUCKETLIST
CAMPSITE
COOSBAY
DIVING
EXPERIENCE
FOOTBALL
HIKING
- HOOUP
JOGGING
KAYAK
MAP
MOSQUITOS
MOUNTAINS
OCEAN
SKIING
SMORES
SUMMER
SUNGLASSES
SURFING
SWIMMING
VOLLEYBALL
WINERIES

T X E D Y N K A Q Z P G H T E I S K Z P H M M B K N L N D M
X X S V J P A I O G H I K A Y A K U T C B B O E C B Y T L D
A F M V T S M N C T C L S J S P P N N M W V E A Y S U D A K
M O O G C A W D I L C S A Z M T G X G G V I Z C Q L L E V M
G O R I C T I D E M V Z E W P X D S N V L T N H B A U D X K
Y T E V O L L E Y B A L L E C Y P W Z O N A K E B Q J Q K R
U B S Q I C A F X T V L I M K Q Z T I Y E S S F R N R F Z K
B A W A B V V U S X K U S X O P V P O M S C U S C I R X O S
E L L C S U K L D I V I N G Z U C W P F K G A R E L E X D L
H L K O P K C Y C X C R A Z B P N B J H D C B M F S Z S B J
E W S O D W I K S H B H R P L N W T R Y Q R J I P I A K F A
O N K S Z B J I E N N A V V C Z L I A M S C J X O S N V O O
Z Z L B W U B O N T P B S K R I G H M I F U B C B A I G Z T
Z I R A H U L I U G L C H E F Y V F O M N L M Z C C H T H Q
F I B Y I B T R K Q A I J H B G Z G S I L S E M V T N W E N
V Z O B K D O Z F I O X S T Z A U A Q P R U O E T V K X L
W B E L I F B A I F N R U T O Z L J U F Z J L C N R M V C D
L J R N N P L S T N K G N C W Y J L I Z A L W O D X D C K U
O M X E G E Y Q H I R N I Z Z Y O N T W B W C J W J X O C O
H C X V W B I D L O N M S C N Z G R O N L R B F C S G Y D
T B G S P E G E I C I G E T L D G T S R U O U X S G O S Y R
L B W M P F R D L H I A L X R G I I X S X C P Z W M U J K V
F G U A U S K I Y E U S K R P X N V P J E E V P I U Z E I E
E W X P A M S M E C L J X W L E G P N E C A C H M R J S V C
F A V P I H L W B S H T S X I X R Y S V W N Y U M J K Q L E
W J P B A V B M I U X O Q M M M E I C G P C W Q I G K L B X
N A D V E N T U R E B F O G T O G C E O S E T N N I A F F G
Q A V S C P S T X X K D M K L J A A I N O W N G G G I B B R
S D U B J I N V N H P C T I U J J Z N C C W K F P Y L J P Q
F M G A M A N A X Y J H G B I P K S M Q J E P L H E Q H H F

SEE PAGE 34 FOR THE KEYS.

FEATURED
MEMBERS



GETTING TO KNOW ROY AND
KATHY HOPPER

Roy and Kathy Hopper had thought about buying an RV after retirement. A former commercial and corporate pilot, Roy had flown passengers around the country, but a retirement of travel – closer to the ground – with Kathy is what he envisioned as an ideal way to spend the golden years.

When the time came in 1999, the Hopper’s considered purchasing a fifth-wheel and truck. It was a brief deliberation. The quality of space in a diesel pusher is what stirred them to buy a 36-foot 1999 Discovery.

“Twenty years later, we’ve been to all the (lower) 48 states,” Roy said by phone from Western Michigan. “And we’ve been to all the big parks, except for Yosemite.”

Roy says they prefer the West, especially Utah and Arizona, with two of their favorite spots being the famous red rock formations of Utah’s Bryce Canyon and the awe-inspiring grandeur of the Grand Canyon.

After more than 40 years in Ann Arbor, the Hopper’s spent their winters in Florida before trekking north and west. This year, Roy and Kathy are going to stay “closer to home,” going no further west than Kansas, Oklahoma and Nebraska to visit family, as well as for the summer club meeting in Amana, Iowa. Roy serves as FCOC’s vice president of area operations – east.

A little more than a decade ago, Roy and Kathy stepped up into a 2007 Tiffin Phaeton with a special previous driver – former FCCC President and CEO Bob Harbin.

“It was a test for a few years and they wanted to sell it,” Roy said, adding that he’s been able to do “99 percent” of his own chassis work. “If I had to have work done, I’d take it Gaffney.”

Roy’s introduction to the FCOC was by happenstance. During a fuel stop in 2002, he and Kathy found themselves blocked in by a Discovery like theirs – except it was blue. It was owned by the club’s president at the time. After a brief introduction and conversation, the two were handed a magazine and application.

A year later, Roy’s selection as a club officer happened with the same kind of unexpectedness, when he was asked to meet with some officers in the president’s coach. They needed an alternate national director—which didn’t sound too taxing. Sixteen years later and Roy’s still an active officer with the club.

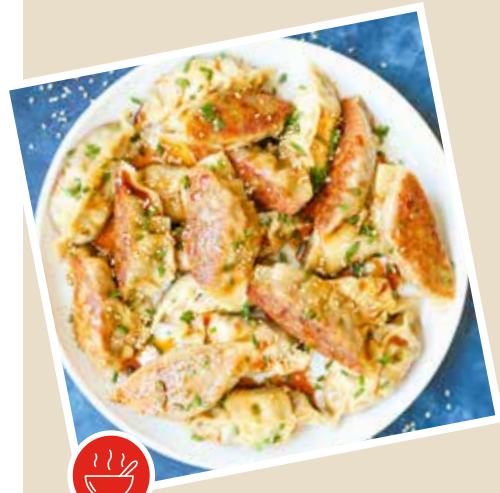
When he wasn’t flying, Roy said he would occasionally drive tractor trailers, which one would believe to be great training for piloting an RV. Um, not really. For one, tractor trailers are easier to get around curves than RVs, Roy said. It’s a different drive, but navigating an RV can be mastered.

“Learn all you can about your coach,” Roy said when asked what tips he would give first-time owners. “Attend seminars, visit the factory, and talk to people who have similar coaches.”

Roy is a fan of FCCC’s 24/7 line, which wasn’t operational when he and Kathy bought their first coach.

“It’s one of the selling points of the chassis,” he said, adding that he once spent nearly 30 minutes speaking with a technician who helped him evaluate an air pressure problem.

“I wish every manufacturer had that available.”

**TIP:**

To freeze, place uncooked potstickers in a single layer on a baking sheet, covered overnight to avoid sticking together. Transfer to freezer bags the following day.

Recipe and Photo by Damn Delicious.

PORK POTSTICKERS

Prep time: 25 minutes Cook time: 15 minutes Servings: 32

INGREDIENTS:

- 1 lb. ground pork
- 1 ¼ cups green onion, thinly sliced
- 1/3 cup cilantro, finely chopped
- 1 tbsp. ginger, freshly grated
- 1 tablespoon reduced sodium soy sauce
- 3 garlic cloves, minced
- 1 tbsp. rice wine vinegar
- 2 tsp. chili garlic sauce (or more, to taste)
- 2 tsp. sesame oil
- 32 (3-inch) round wonton wrappers
- 2 tbsp. canola oil
- ½ tsp. sesame seeds

DIRECTIONS:

1. In large bowl, combine ground pork, green onions, cilantro, ginger, garlic, soy sauce, rice wine vinegar, chili garlic sauce and sesame oil.
2. To assemble potstickers, place wrappers on work surface and spoon 1 tablespoon of pork mixture into center of each. Using your finger, rub the edges of the wrappers with water. Fold the dough over the filling to create a half-moon shape – pinching edges to seal.
3. Heat canola oil in a large skillet over medium heat and have ¼ cup water measured out. Working in batches, add potstickers in a single layer and cook until beginning to crisp on bottom (about 2-3 minutes).
4. Working quickly, add the ¼ cup water, cover and cook until liquid has evaporated and bottoms of dumplings are crisp and golden (about 3-5 minutes). Sprinkle with sesame seeds.
5. Repeat until all potstickers are cooked. Serve immediately with soy sauce, wasabi or your favorite dipping sauce.

NOTE: The filling in the potstickers does not have to be cooked prior to wrapping.

**TIP:**

For a truly scrumptious, decadent dish, top with vanilla or cinnamon ice cream.

Recipe and Photo by I Can Cook That.

SLOW COOKER NUTELLA FRENCH TOAST CASSEROLE WITH CARAMELIZED BANANAS

Prep time: 15 minutes Cook time: 2 hours

Servings: 8

INGREDIENTS:

- 1 loaf challah bread (about 1 lb.), cut into cubes
- 6 large eggs
- 1 tsp ground cinnamon
- 4 bananas, sliced
- 1 tbsp. vanilla extract
- 2 cups vanilla almond milk (regular milk or your preferred milk substitute)
- 2 heaping tbsp. Nutella (plus more, for topping)
- Pinch of salt
- 1 tbsp. unsalted butter
- 1 tbsp. brown sugar

DIRECTIONS:

1. Place cubed bread in slow cooker.
2. In large bowl, whisk to combine eggs, milk, cinnamon, vanilla, Nutella and salt. Pour over challah bread and mix so all bread is saturated with the mixture.
3. Cover and cook on high for 2 hours. (Depending on size/heat of slow cooker, this time may have to be adjusted. Check every hour and mix for even cooking.)
4. When there are about 15 minutes left, slice bananas and add to a bowl with brown sugar. Mix to combine.
5. Add butter to a sauté pan over medium high heat. Add bananas (you may have to work in batches) and cook until bananas have browned slightly (about 2 minutes).
6. Scoop out the French toast mixture and top with bananas and a dollop of Nutella, if desired.

**TIP:**

Replace chicken with your favorite protein, such as turkey or beef – or remove entirely for a vegetarian dish.

Recipe and Photo by Woman's Day Kitchen

SLOW COOKER CHICKEN POT PIE

Prep time: 25 min Cook time: 1 hour Servings: 12

INGREDIENTS:

- ½ cup dry white wine
- 2 tbsp. all-purpose flour
- ½ cup water
- ½ tsp. Kosher salt and pepper
- 4 medium carrots
- 2 stalks celery
- 1 onion
- 1 ½ lbs. boneless, skinless chicken thighs
- 1 sheet frozen puff pastry
- 1 egg
- 1 cup frozen peas
- 3 tbsp. fresh dill sprigs

DIRECTIONS:

1. Whisk together wine, flour, water, salt and pepper in slow cooker.
2. Add carrots, celery, onion and chicken; toss to combine.
3. Cook, covered, until chicken is cooked through and easily pulls apart (6-7 hours on low or 4-5 hours on high).
4. When chicken has 30 minutes left to cook, heat oven to 400-degrees. Cut puff pastry into eight rectangles and place on parchment-lined baking sheet. Brush with egg and bake until puffed and golden brown (20-25 minutes).
5. Gently fold peas and dill into slow cooker mixture and cook, covered, until heated through (about 3 minutes).
6. Spoon into bowls, sprinkle with additional dill (if desired) and top with puff pastry.

SUDOKU

| | | | | | | | | |
|---|---|---|---|---|---|---|---|---|
| 9 | 3 | 4 | 7 | 2 | 5 | 1 | 8 | 6 |
| 5 | 6 | 7 | 1 | 8 | 3 | 9 | 4 | 2 |
| 8 | 1 | 2 | 4 | 9 | 6 | 5 | 7 | 3 |
| 2 | 4 | 1 | 5 | 3 | 7 | 6 | 9 | 8 |
| 6 | 5 | 9 | 8 | 1 | 4 | 2 | 3 | 7 |
| 7 | 8 | 3 | 9 | 6 | 2 | 4 | 1 | 5 |
| 1 | 9 | 6 | 2 | 7 | 8 | 3 | 5 | 4 |
| 4 | 2 | 8 | 3 | 5 | 9 | 7 | 6 | 1 |
| 3 | 7 | 5 | 6 | 4 | 1 | 8 | 2 | 9 |

WORD SEARCH

T X F D Y N K A Q Z P G H T E I S K Z P H M M B K N L N D M
X X S V J P A L O G H I K A Y A K U T C B B O E C B Y T L D
A F M V T S M N C T C L S J S P P N N M W V E A Y S U D A K
M O O G C A W D I L C S A Z M T G X G G V I Z C Q L L E V M
G O R I C T I D E M V Z E W P X D S N V L T N H B A U D X K
Y T E V O I L F Y B A L I E C Y P W Z O N A K E B Q J Q K R
U B S Q I C A F X T V L I M K Q Z T I Y E S S F R N R F Z K
B A W A B V V U S X K U S X O P V P O M S C U S C I R X O S
E L L C S U K L D I V I N G Z U C W P F K G A R E L E X D L
H U K O P K C Y C X C R A Z B P N B J H D C B M F S Z S B J
E W S O D W I K S H B H R P L N W T R Y O R J I P I A K F A
O N K S Z B I I E N N A V V C Z L I A M S C J X O S N V O O
Z Z L B W U B O N T P B S K R I G H M I F U B C B A I G Z T
Z I R A H U L I U G L C H E F Y V F O M N L M Z C C H T H Q
F I B Y I B T R K Q A I J H B G Z G S I L S E M V T N W E N
V Z Q B K D O Z F I O X S T Z A U A Q P R U R O E T V K X L
W B E L I F B A I F N R U T O Z L J U F Z J L C N B M V C D
L J R N N P L S T N K G N C W Y J U I Z A L W O D X D C K U
O M X E G E Y Q H I R N I Z Z Y O N T W B W C J W J X O C
H C X V W B I D L O N M S C N Z G R O N L R L B E C S G Y D
T B G S P E G E I C I G E T L D G T S R U O U X S G Q S Y R
L B W M P F R D L H I A L X R G I I X S X C P Z W M U J K V
F G U A U S K I Y E U S K R P X N V P J E E V P I U Z E I E
E W X P A M S M E C I J X W L E G P N E C A C H M R J S V C
F A V P I H L W B S H T S X I X R Y S V W N Y U M J K Q L E
W I P B A V B M I U X O O M M M E I C G P C W O I G K L B X
N A D V E N T U R E B F O G T O G C E Q S E T N N I A F F G
Q A V S C P S T X X K D M K L J A A I N Q W N G G G I B B R
S D U B J I N V N H P C T I U J J Z N C C W K F P Y L J P Q
F M G A M A N A X Y J H G B I P K S M Q J E P L H E Q H H F

DON'T LET **YOUR** MEMBERSHIP EXPIRE!

Please look at your label on the back of this newsletter to see if your membership is about to expire. We send out reminders at least two months in advance of your expiration, both by email and by mail, to provide adequate time to renew your membership. Dues are \$15.00/year or \$70.00 for five years. See Membership Application on page 35.

To access by Internet, visit the website at www.FCOCR.V.org.

After logging in, you have the ability to conveniently renew your membership using PayPal. Simply click "Renew/Pay Dues" in the top right corner of your screen.

You may also update your membership and personal information by selecting "View/Update Your Profile."

PLEASE NOTE: If you are logging into the new site for the first time, your password is the same as it was for the old site. If you've forgotten your password, click "Forgot Password" under the login fields.

Disclaimer: FCOC is not responsible for personal statements, opinions or representation advanced in papers, newsletters, web site, in discussions at any meetings or its Internet site and Discussion Forums, or the validity of statements contained in any advertisements.



GET
RV SOUL
BY EMAIL!

You may request to have our newsletter delivered by email, especially if you travel frequently or if your mail is forwarded more than once a year. You will receive the newsletter earlier than those mailed, and they won't pile up in your motorhome. You will receive an email when the newsletter is ready to be viewed. Recent as well as previous issues of Freightliner Flyer are available for viewing and printing on the website.

For those who do not have email, please make sure we have your correct mailing address – especially those of you who have a seasonal address. We are experiencing a large number of newsletters returned. Time, money and postage rates are affected when they are undeliverable.

Thank you for helping us do a better job of getting important FCOC news and current updates to you! We want you to be in the know!



MEMBERSHIP APPLICATION

DATE _____ ☐ NEW ☐ RENEWAL

MEMBER ID _____ OR APPLICATION DATE _____

If you have an FMCA or FCOC number, please use it here. If not, one will be issued to you.

NAME
FIRST _____ LAST _____ NICKNAME _____

CO-PILOT
FIRST _____ LAST _____ NICKNAME _____

PRIMARY PHONE (____) _____ CELL PHONE (____) _____

ADDRESS (PRIMARY)

CITY _____ STATE _____ ZIP _____ COUNTRY _____

ADDRESS (SEASONAL)

CITY _____ STATE _____ ZIP _____ START & END DATE _____

E-MAIL _____

NEWSLETTER DELIVERY
(CHECK): ☐ ELECTRONIC ☐ MAIL DELIVERY

CHASSIS MANUFACTURER
(CHECK ONE): ☐ FREIGHTLINER ☐ OSHKOSH ☐ JOHN DEERE

MANUFACTURER OF MOTOR HOME

MODEL _____

YEAR _____ LENGTH (FT.) _____ VIN # OF CHASSIS (REQUIRED FOR MEMBERSHIP)

PURCHASE DATE _____ ARE YOU THE ORIGINAL OWNER? ☐ YES ☐ NO

DUES ARE \$15.00 PER YEAR OR FIVE YEARS FOR \$70.00 U.S. DOLLARS

SEND TO: FREIGHTLINER CORPORATION – C/O FCOC
552 HYATT STREET, GAFFNEY, SC 29341
(864) 487-1700

ONLINE MEMBERSHIP UPDATE OR RENEWAL

Anyone can access our website without logging in by going to www.FCOCRV.org. When a Member wants to update their member profile or pay their dues, they will need to log in with two pieces of information: a membership number and a password. When a Member has difficulty signing in, it is usually either because they forgot to include the letter "F" at the front of their membership number, or because they forgot their password. If a new Member joins via our website, they will provide their own password at that time. New Members who apply by mail will receive their password by email when their registration information has been entered. Members can change their password at any time by logging in and updating their profile.



TO JOIN FCOC:

1. Select "Join FCOC" on the home page or in the top right corner of any page on the site.
2. Select the number of years you'd like to commit to and pay for.
3. Fill out all relevant fields. Those with an asterisk (*) must be completed.
4. Make note of the number in the "Username - Member ID" field. This is your FCOC ID number, which you'll need to log in to the site.
5. When you're finished, select your payment method and click "Sign Up" at the bottom. If you navigate away from this screen before clicking "Sign Up," your input will not be recorded and you will be required to start over.
6. Complete your payment information and follow instructions to submit.

TO PAY DUES:

1. Sign in using the "Membership Log In" fields on the home page or the "Sign In" link in the top right corner of any page on the site.
2. Once you've signed in, select "Renew / Pay Dues" in the upper right corner of your screen.
3. Select the number of years you'd like to commit to and pay for.
4. Double-check that the information that populates in the form fields is correct. If it is not, change anything you need to, and the updated information will be stored in the database.
5. Select your payment method and click "Sign Up" at the bottom. If you navigate away from this screen before clicking "Sign Up," your input will not be recorded, and you will be required to start over.
6. Complete your payment information and follow instructions to submit.

If you do not have access to a computer or email, you may use the application in this newsletter on page 47.
If you have any problems, please let me know. My contact information is on page 4.

MARY COSTIGAN, VP Membership

ADVENTURE AWAITS...

LET US TAKE YOU THERE!

Celebrating
25 YEARS OF EXCELLENCE IN GUIDED RV TOURS & RALLIES
UNITED STATES • ALASKA • CANADA • OVERSEAS

Request Your **FREE** RV Vacation Guide

CALL 936.327.3428

AdventureCaravans.com

Follow Us



Mens Crimson Shirt
Available in Small To 4X



Ladies Crimson Shirt
Available in Small To 2X



Ladies Grey T-Shirt
Small to 4X



Mens Grey T-Shirt
Small to 4X



FCOC Logo Hat



Ladder Bracket for Logo Egg

FCOC LOGO MERCHANDISE



FCOC Logo Ladder



Smaller Clinging Front Window Plaque

| DATE: | CHECK #: | ITEM | QTY | AMOUNT | TOTAL |
|---|------------------------------|------------------------------|-----|-------------|-------|
| MEMBER ID# | | Ladies Crimson Small | | \$25.00 | |
| NAME | | Ladies Crimson Medium | | \$25.00 | |
| ADDRESS 1 | | Ladies Crimson Large | | \$25.00 | |
| ADDRESS 2 | | Ladies Crimson X-Large | | \$25.00 | |
| CITY | STATE: | Ladies Crimson XX-Large | | \$25.00 | |
| ZIP CODE | | Mens Crimson Small | | \$25.00 | |
| Checks payable to "FCOC" and send check to: Mary Costigan FCOC Logo Merchandise 900 Bradford Court San Jacinto, CA 92583-6530 Cell: (951) 452-2999 E-Mail: mary.costigan2@gmail.com | | Mens Crimson Medium | | \$25.00 | |
| | | Mens Crimson Large | | \$25.00 | |
| | | Mens Crimson X-Large | | \$25.00 | |
| | | Mens Crimson 2X-Large | | \$25.00 | |
| | | Mens Crimson 3X-Large | | \$25.00 | |
| | | Mens Crimson 4X-Large | | \$25.00 | |
| | | Ladies Grey T-Shirt Small | | \$15.00 | |
| | | Ladies Grey T-Shirt Medium | | \$15.00 | |
| | | Ladies Grey T-Shirt Large | | \$15.00 | |
| | | Ladies Grey T-Shirt X-Large | | \$15.00 | |
| USPS SHIPPING CHARGES | | Ladies Grey T-Shirt 2X-Large | | \$15.00 | |
| | | Ladies Grey T-Shirt 3X-Large | | \$15.00 | |
| 1 to 4 ITEMS | 8.00 USD | Ladies Grey T-Shirt 4X-Large | | \$15.00 | |
| 5 + ITEMS | \$14.35 USD (in one package) | Mens Grey T-Shirt Small | | \$15.00 | |
| | | Mens Grey T-Shirt Medium | | \$15.00 | |
| | | Mens Grey T-Shirt Large | | \$15.00 | |
| | | Mens Grey T-Shirt X-Large | | \$15.00 | |
| | | Mens Grey T-Shirt 2X-Large | | \$15.00 | |
| | | Mens Grey T-Shirt 3X-Large | | \$15.00 | |
| | | Mens Grey T-Shirt 4X-Large | | \$15.00 | |
| | | FCOC Logo Hat | | \$15.00 | |
| | | FCOC Logo Plaque | | \$20.00 | |
| | | FCOC Logo Window Plaque * | | \$5.00 | |
| | | Plaque Ladder Holder * | | \$10.00 | |
| | | TOTAL # OF ITEMS | | Sub-Total | |
| | | | | Shipping | |
| | | TOTAL IN US DOLLARS | | Order Total | |

Effective: 2/16/2019

* 1 Ladder Plaque Holder or 1 FCOC Window Plaque, does not count as an item unless either are ordered by themselves. Every 2 additional Holders or Window Plaque count as 1 additional item.

CANADA - CALL OR EMAIL FOR SHIPPING PRICE

THANK YOU FOR YOUR ORDER & SUPPORT

OFFERS FROM OASIS AND PARTICIPATING DEALERS

Freightliner Custom Chassis Corporation (FCCC) and select Freightliner Oasis dealerships around the country have initiated a program offering members of the Freightliner Chassis Owners Club (FCOC) special pricing on service labor and service parts.

The program offers current FCOC members the following discounts:
10% OFF POSTED LABOR RATES & 10% OFF PARTS.

It is important that you do the following; if you don't, you may not get the discount and it will be your own fault!

You MUST tell them you are an FCOC member up front, request the discount and identify yourself by showing your current membership card. Ask to get a copy of your billing with the discount on it once your work is done.

In developing the Oasis Dealer Discount Program, all Oasis Dealers were contacted and invited to participate. But, participation in the Oasis Dealer Discount Program is a business decision made by each individual Oasis Dealer.

If the Oasis Dealer you wish to use is not on the list of participating dealers, we would encourage you to let them know of your desire to have them participate in the program. Dealers wishing for more information about the program should contact James Peek: phone (916) 870-9322, email VP.BUSDEV@FCOCRV.ORG. Also, if you have any problem with any Oasis Dealer on the list, let Tom James know, and he will try to help.

As a reminder, it's up to you to **ask first** for the discount, not after.

PLEASE REMEMBER: THESE OASIS DEALERS ARE SUPPORTING FCOC, SO PLEASE GO TO THESE DEALERS ONLY.

+ Some Dealers below offer hook ups for our RV Members. Look for the symbol to see which Dealers offer which hook ups:

**W: WATER E: ELECTRICITY S: SEWER D: DUMP STATION
DP: DOGGIE PARK L: LOUNGE RV**

PARTICIPATING OASIS NETWORK DISCOUNT PROGRAM CENTERS:

+ **Freightliner of Arizona**
9899 W. Roosevelt St.
Tolleson, AZ 85353
(623) 907-6642
Ser. Mgr. Larry Winiewicz
W, E, S, DP, L

TAG Truck Center
5712 Commerce Square
Jonesboro, AR 72401
(870) 972-8588
Ser. Mgr. Brian Carter

Truck Centers of Arkansas
11700 Valentine Rd.
North Little Rock, AR 72117
(800) 562-8875
Ser. Mgr. John Siverd

Truck Centers of Arkansas
2675 W. Sunset Blvd.
Springdale, AR 72762
(800) 495-4551
Ser. Mgr. Bill Partain

Delta Truck Center
S. Harlan Rd.
French Camp, CA 95231
(800) 400-4161

Sacramento Truck Center
100 Opportunity St.
Sacramento, CA 95838
(916) 286-2000
(800) 485-8311
Ser. Mgr. Lawrence Cowan

San Diego Freightliner
6006 Miramar Rd.
San Diego, CA 92121
(877) 454-5456
(619) 564-3700
Ser. Mgr. Gene Hust

Southern Connecticut Truck Center
15 East Industrial Rd.
Branford, CT 06405
(800) 448-8480
Ser. Mgr. Michael Beavton

Freightliner of Hartford
199 Roberts Street
East Hartford, CT 06108
(860) 289-0201 x1118
Ser. Mgr. Scott Thayer

+ **Orlando Freightliner**
2455 S. Orange Blossom Trail
Apopka, FL 32703
(407) 295-3846
Ser. Mgr. Lee Feeser
W, E, DP, L

Tom Nehl Truck Co.
383 SW Arrowhead Terr.
Lake City, FL 32024
(904) 389-3653
(386) 755-9527
Ser. Mgr. Rex Steven

Ocala Freightliner
3950 W. Hwy. 326
Ocala, FL 34482
(352) 840-0070
Ser. Mgr. Scott Pauley

Truck Centers, Inc.
300 East Ashland St.
Morton, IL 61550
(309) 263-4240
(800) 397-4292
Ser. Mgr. Cathie Jenkins

Truck Centers, Inc.
2981 E. Singer
Springfield, IL 62703
(217) 525-1280
(800) 786-1280
Ser. Mgr. Charlie Melvin

Truck Centers, Inc.
747 E. Taylor St.
St. Louis, MO 63147
(314) 381-3800
Ser. Mgr. Neil Yahl

Truck Centers, Inc.
2280 Formosa Rd.
Troy, IL 62294
(800) 669-3454
Ser. Mgr. Paul Buehrle

Stoops Freightliner Quality Trailer, Inc.
6105 Columbus Ave.
Anderson, IN 46013
(765) 644-1400
(877) 881-7993
Ser. Mgr. Doug Dau

Stoops Freightliner Quality Trailer, Inc.
12247 Declaration Dr.
New Haven, IN 46774
(260) 749-8587
(877) 518-2065
Ser. Mgr. Jeff Bouck

Stoops Freightliner Quality Trailer, Inc.
1851 W Thompson Rd.
Indianapolis, IN 46217
(317) 788-1533
(877) 518-8221
Ser. Mgr. Mike Miller

Truck Country Cedar Rapids
700 29th Ave. SW
Cedar Rapids, IA 52406
(319) 365-0531
(800) 332-6158
Ser. Mgr. Chris Flockhart

Truck Country Quad Cities
2350 W. 76th St.
Davenport, IA 52806
(563) 445-5870
Ser. Mgr. Darin Bohr

Truck Country Decorah
1653 State Highway 9
Decorah, IA 52101
(563) 382-6551
(888) 545-9297
Ser. Mgr. Ray Clark

Truck Country Dubuque
10785 Route 61 South
Dubuque, IA 52003
(563) 556-3775
(800) 553-3642
Ser. Mgr. Ray Clark

Harrison Truck Centers
101 Plaza Drive Elk Run
Heights, IA 50707
(800) 582-5789
Todd Rathbone

Harrison Truck Centers
PO Box 1708
Waterloo, IA 50704
(319) 234-4453
Ser. Mgr. Rodd Rathnone

TAG Truck Center
215 Campbell Dr.
Calvert City, KY 42029
(270) 395-8200
Ser. Mgr. Randy Mathis

Kent-Mitchell Bus Sales & Svc
41430 East I55
Hammond, LA 70403
(985) 419-8347
Ser. Mgr. Emile Musso

Baltimore Freightliner
2723 Annapolis Rd.
Baltimore, MD 21230
(410) 685-4474
Ser. Mgr. Jessica Levine

Freightliner of Grand Rapids
5285 Clay Ave SW
Grand Rapids, MI 49548
(800) 968-9680
Ser. Mgr. Mark List

Freightliner of Kalamazoo
53449 Main St.
Kalamazoo, MI 49071
(800) 968-9680
Ser. Mgr. Mark List

Truck Center Inc.
2880 Hwy 67 South
Farmington, MO 63640
(573) 712-8817
Ser. Mgr. Andy Vittoe

TAG Truck Center
3792 Hwy 67 No
Poplar Bluff, MO 63901
(573) 785-0193
Devin Russom

TAG Truck Center
1485 Hwy 177
Jackson, MO 63755
(573) 339-1890
Ser. Mgr. Jeff Runnels

TAG Truck Center
307 Lynual Drive
Sikeston, MO 63810
(573) 471-7100
Ser. Mgr. Mark Riney

Truck Center Inc.
747 E Taylor Ave.
St Louis, MO 63147
(800) 325-8809
Ser. Mgr. Larry King

TAG Truck Center
2448 McCullough Blvd
Tupelo, MS 38826
(662) 844-3262
Ser. Mgr. Gary Greszier

Albuquerque Freightliner
12901 I-40W Frontage Rd.
Albuquerque, NM
(505) 833-1000
Ser. Mgr. David Robinson

Hans' Freightliner
14520 Broadway Avenue
Cleveland, Ohio 44125
Phone: (216) 581-0046 Ext. 181
Cell: (440) 334-7262
Fax: (216) 581-8610
Sales Rep. Bryan Grega

Stoops Freightliner Quality Trailer, Inc.
7800 Center Point 70 Blvd.
Dayton, OH 45424
(937) 236-4092
(877) 518-0112
Ser. Mgr. Mark Vonderhuval

TSI Western Star
385 South Bailey Rd.
North Jackson, OH 44451
(330) 538-3850
(800) 388-3850
Ser. Mgr. Kevin Shaulis

Premier Truck Group of Oklahoma City
5301 I-40 West
Oklahoma City, OK 73128
(877) 621-0428
Ser. Mgr. Josh Meyers

Premier Truck Group of Tulsa
5104 W. 60th St.
Tulsa, OK 74107
(866) 599-8351
(918) 445-5300
Ser. Mgr. Ron Beaver

Fyda Freightliner Pittsburgh, Inc.
20 Fyda Dr.
Canonsburg, PA 15317
(800) 393-2556
Ser. Mgr. Brian Conkle

+ **Premier Truck Group of Knoxville**
1413 Everett Rd.
Knoxville, TN 37932
(865) 824-2400
Ser. Mgr. Dwyane Overton
E, DP, L

TAG Truck Center
112 E. L. Morgan Drive
Jackson, TN 38305
(731) 423-3782
Ser. Mgr. Kevin McAdams

+ **TAG Truck Center**
4450 American Way
Memphis, TN. 38118
(800) 264 0336
Ser. Mark Sampson
E, DP, L

+ **Tranwest Truck Center**
10150 Cherry Ave
Fontana, CA. 92335
(909) 770 5623
W, E, S, D, DP

Premier Truck Group of Amarillo
2210 South Whitaker Rd.
Amarillo, TX 79118
(806) 374-1033
(800) 753-1556
Ser. Mgr. Paul Tarbet

Premier Truck Group of Ardmore
3601 12th Ave NW
Ardmore, OK 73401
(580) 223-2233

Premier Truck Group of Chattanooga
kshumake@premiertruck.com
Phone: (706) 937-3700
Fax: (706) 937-6730
Ser. Mgr. Ken Shumake

+ **Premier Truck Group of Dallas**
4200 Port Blvd.
Dallas, TX 75241
(800) 580-2620
(972) 225-4300
Ser. Mgr. Justin Griffin
W, E

Premier Truck Group of Dallas
3040 Irving Blvd
Dallas, TX 75247
(214) 631-6213

Premier Truck Group of Fort Worth
1804 NE Loop 820
Fort Worth, TX 76106
(800) 580-9101

Premier Truck Group of North Texas
1610 North Collins Freeway
Howe, TX 75459
Ser. Mgr. Donald Ballance

Premier Truck Group of Odessa
1100 South Grandview
Odessa, TX 79761
(800) 687-3381

Premier Truck Group of Oklahoma City
5301 I-40 West
Oklahoma City, OK 73128
(877) 621-0428
Ser. Mgr. Josh Meyers

Premier Truck Group of Tulsa
5104 W. 60th St.
Tulsa, OK 74107
(866) 599-8351
(918) 445-5300
Ser. Mgr. Ron Beaver

Freightliner Northwest
524 Jacks Lane
Mt. Vernon, WA 98273
(360) 848-0472
Ser. Mgr. Jonathan Callis

Truck Country Madison
4195 Anderson Rd.
DeForest, WI 53532
(608) 249-1900
(800) 837-7367
Ser. Mgr. Jerry Brickheimer

River States Truck & Trailer, Inc.
6124 Chuck Lane
Eau Claire, WI 54703
(715) 874-4700
(800) 944-5973
Ser. Mgr. Henry Le Bakken

Truck Country of WI
2401 Progress Way
Kaukauna, WI 54130
(800) 236-5271
Ser. Mgr. Matt Lueneburg

River States Truck & Trailer, Inc.
3959 N. Kinney Coulee Rd.
LaCrosse, WI 54601
(608) 784-1149
Ser. Mgr. Steve Kemp

Truck Country Marinette
2890 Cleveland Ave.
Marinette, WI 54143
(715) 735-7020
(888) 315-5995
Ser. Mgr. Justin Gleiter

Truck Country Milwaukee
2222 W Ryan Rd.
Oak Creek, WI 53154
(414) 761-3384
(800) 236-6061
Ser. Mgr. Tom Foecker

River States Truck & Trailer, Inc.
690 Starr Lane
Roberts, WI 54023
(715) 749-3100
(866) 995-3121
Ser. Mgr. Nate Sonnentag

Truck Country Wausau
2435 Trailwood Lane
Rothschild, WI 54474
(715) 359-9989
(800) 348-9195
Ser. Mgr. Mark Mattila

Truck Country
119 State Hwy 11
Shullsburg, WI 53586
(608) 965-4462
(800) 362-1313
Ser. Mgr. Mike Banghart

If you are a Dealer and have any of these items and would like to be put on this list, contact Tom James at vp.busdev@fcocrv.org.



CHANGE SERVICE REQUESTED

Presort Standard
U.S. Postage
PAID
Cincinnati, OH
Permit No. 6523

FCOC

PO Box 1527 | Cortaro, AZ 85652



ALLISON TRANSMISSIONS
800-524-2303



GREAT SUPPORTERS



CUMMINS ENGINE CO.
(800-343-7357)
800-DIESELS



800-TIRE-HELP
(800-847-3435)

If you are part of our Freightliner Custom Chassis' family and want to see your company proudly advertised on this FULL COLOR back page of the FCOC *RV Soul*, contact James Peek, VP Business Development at vp.busdev@fcocrv.org or call (732) 552-6862.